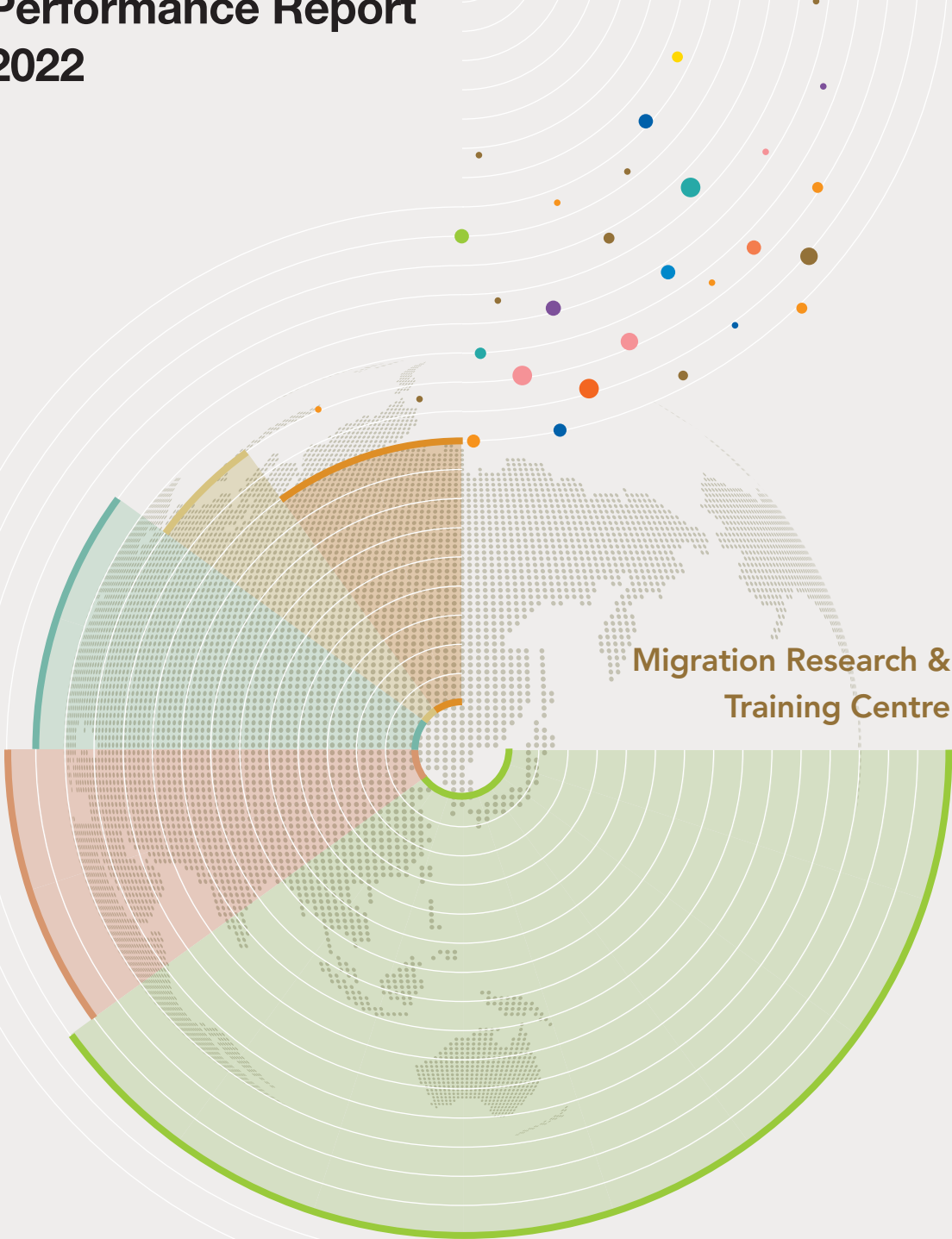


MRTC Performance Report 2022

MRTC PR Material 2023-01



Migration Research &
Training Centre



Migration Research & Training Centre
이민정책연구원
Partner Organization of IOM

MIGRATION RESEARCH & TRAINING CENTRE
Performance Report 2022

CONTENTS

Preface	05
---------	----

PART 1. Introduction of MRTC

Purpose of Foundation and Functions	08
MRTC History	09
Vision & Mission, Organization	10
Overview of MRTC in 2022	12

PART 2. 2022 MRTC Highlights

01. 4 Major News of MRTC in 2022	16
02. Research Projects	18
03. Education & Training Projects	30
04. Cooperation Projects	34

PART 3. MRTC's Initiatives in 2023

01. Research Projects	42
02. Education & Training Projects	44
03. Cooperation Projects	46

Established in December 2009 through a special partnership between the Korea government and the International Organization for Migration (IOM), the **Migration Research and Training Centre (MRTC)** has pioneered research and training on migration policy and partnered with organization in home and abroad to conduct more effective and productive research and training.

Especially in April 2023, through the amendment of the "Framework Act on Treatment of Foreigners Residing in the Republic of Korea," the MRTC has established a legal basis for the operation of Center, thus, creating an opportunity to position ourselves as the only specialized research and education institution in the country for the development of national immigration policies.



As the sole immigration policy research and training institution in Korea, the Migration Research and Training Centre (MRTC) conducts immigration policy research, education, and cooperation projects that benefit both the government and local communities, and Koreans and immigrants alike.

A new government administration, which came into office last year, is promoting the establishment of the Immigration Agency, which will systematically oversee domestic immigration policies from a future-oriented perspective. This will be a very important stepping stone for sustainable economic development and social integration as a countermeasure to the serious population decline, disappearance of local villages, and labor shortage caused by the falling fertility rate and aging population.

In line with this trend of the times, the MRTC is also making efforts to contribute to devising a feasible immigration policy direction and establishing a reasonable policy mechanism based on data by closely analyzing immigration policy-related issues and problems facing Korean society.

In addition, the MRTC is actively conducting various research and education projects to create a society where Koreans and immigrants can coexist harmoniously, such as improving the acceptance of immigration by Koreans, helping immigrants settle in Korean society, and fostering immigration policy experts. Additionally, by strengthening global partnerships, the MRTC is expanding joint research and cooperation projects in the field of international migration.

Please continue to show interest and unwavering support to help the MRTC take the lead in research and training on "Immigration policies that promote the mutual growth of Korea and the international community."

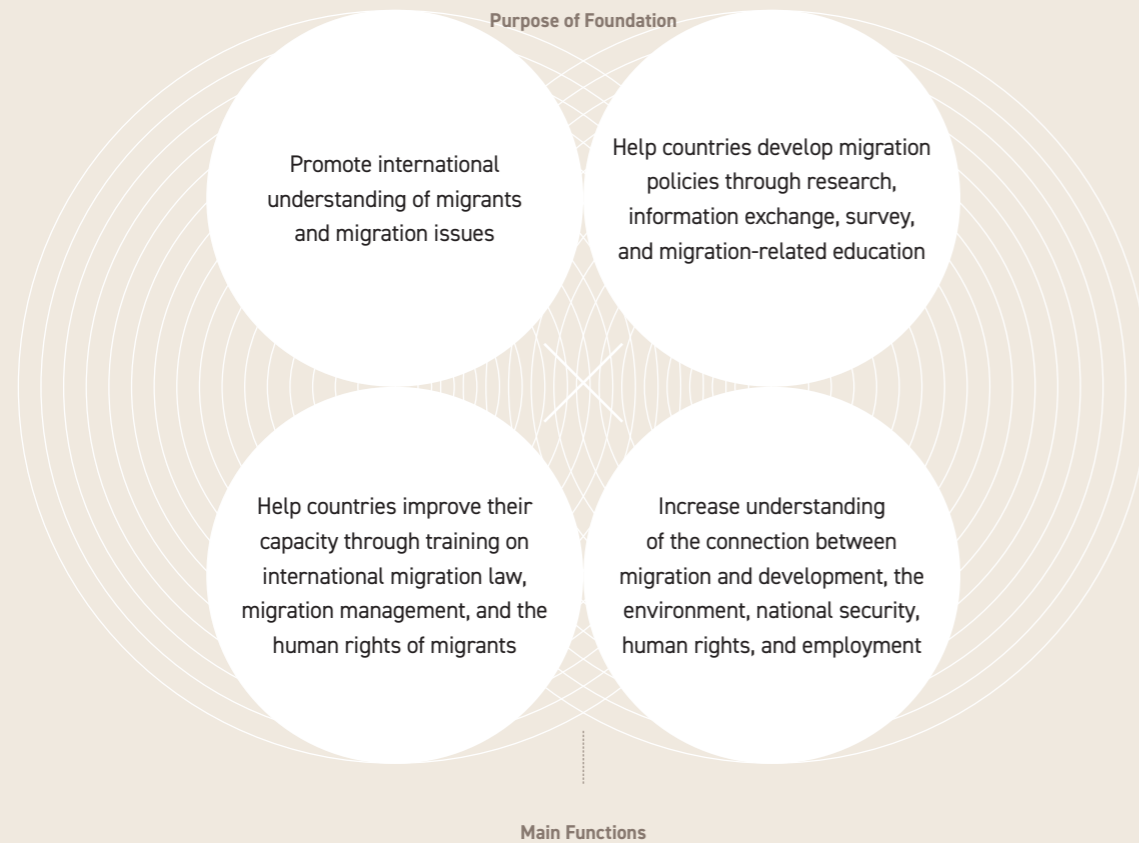


PART 1

INTRODUCTION OF MRTC

Purpose of Foundation and Functions	08
MRTC History	09
Vision & Mission, Organization	10
Overview of MRTC in 2022	12

Purpose of Foundation and Functions



- | | | |
|---|--|--|
| <p>01 Survey, research, consulting, and information exchange on immigration policies and laws across countries</p> | <p>02 Social integration program, education, and training</p> | <p>03 Training of experts on domestic and overseas immigration laws and policies</p> |
| <p>04 International exchanges, cooperation programs, and international conferences on immigration policies and laws</p> | <p>05 Publication and dissemination of academic materials, periodicals, reports, and other books</p> | <p>06 Other activities to meet MRTC's goals</p> |

MRTC History

2007

NOV.
The Ministry of Justice, Gyeonggi Province, and the IOM signed an MOU on the establishment of the MRTC

2009

JUL.
The agreement on the establishment of the MRTC between the Republic of Korea and the IOM entered into force

DEC.
MRTC opened

2010

MAR.
Charles Harns inaugurated as the 1st Director

2012

MAR.
MRTC designated as the Asia Secretariat of the International Metropolis Project

2014

JUL.
The Korean government and IOM signed the Establishment Agreement

SEP.
Jang, Joon-Oh inaugurated as the 2nd Director

2015

JAN.
MRTC designated as the First Support Unit of the Initial Orientation Course for Immigrants (MOJ)

2017

JAN.
Chung, Ki-Seon inaugurated as the 3rd Director

2019

NOV.
MRTC's 10th-anniversary celebration

2020

JAN.
Kang, Dong-Kwan inaugurated as the 4th Director

MAY.
MRTC relocated to Seoul from Gyeonggi Province

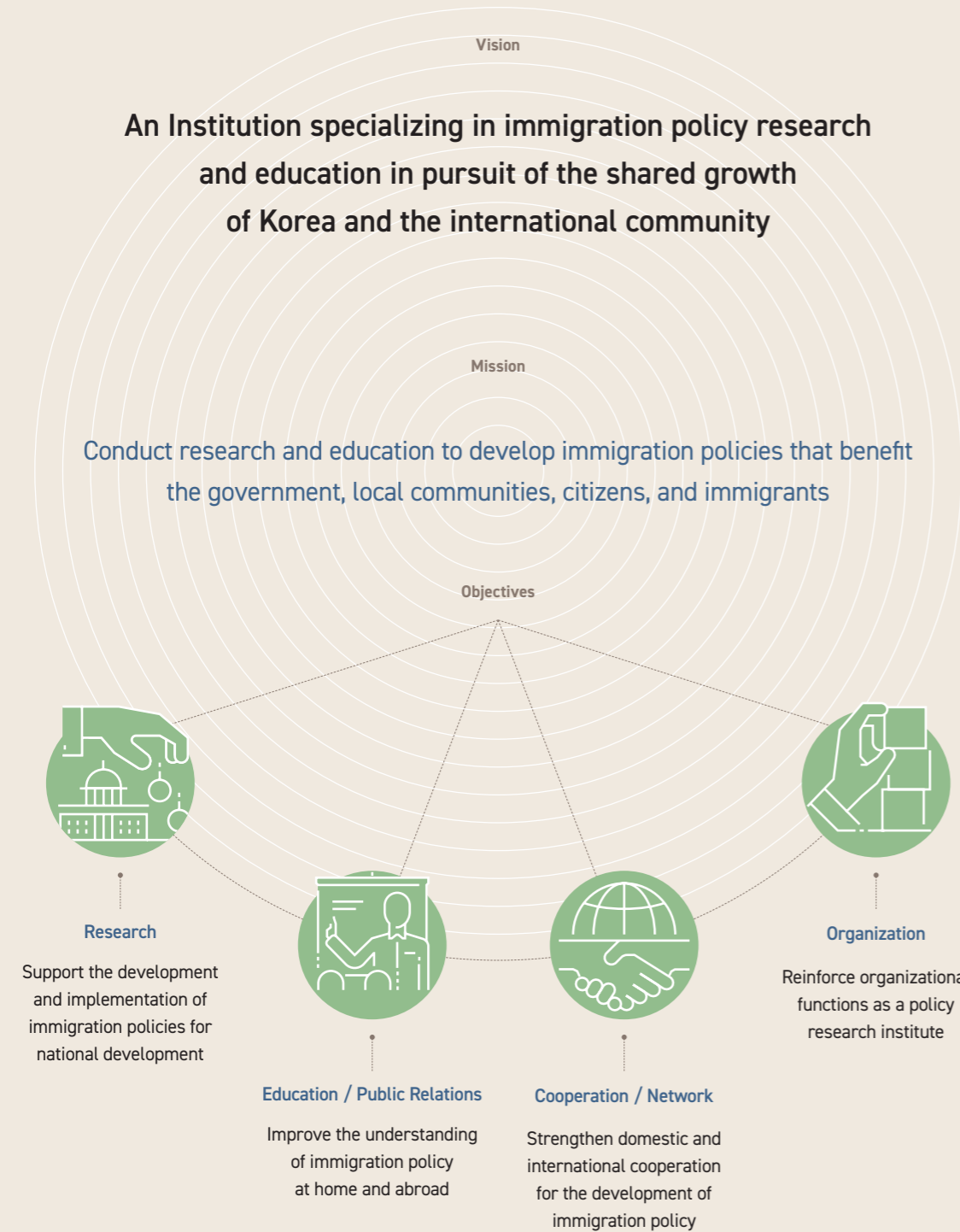
2021

DEC.
IOM's 70th-anniversary celebration with IOM Seoul and the Seoul Metropolitan Government

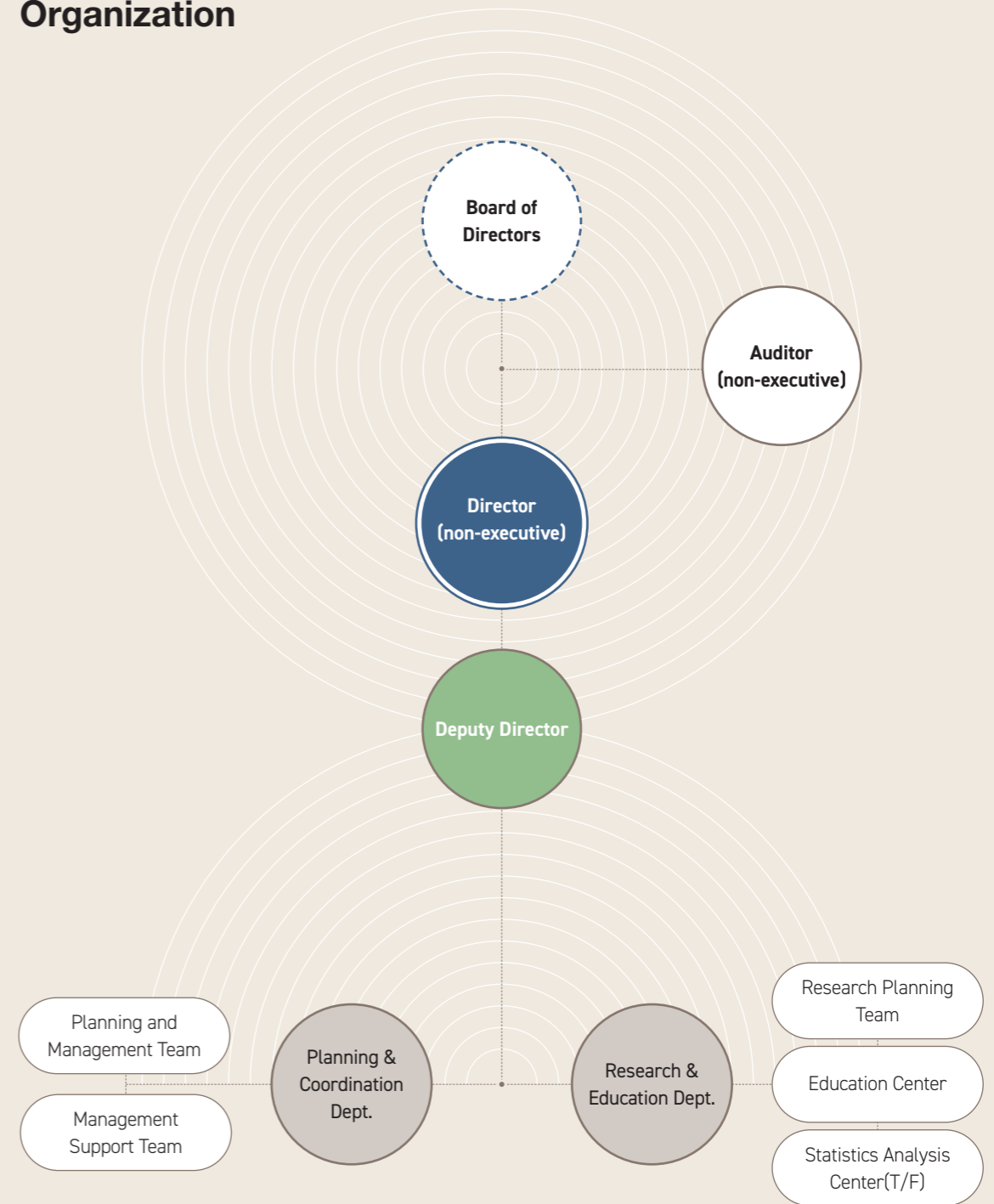
2023

APR.
「Framework Act on Treatment of Foreigners Residing in the Republic of Korea」 Article 22-2(Migration Research and Training Centre) newly inserted (Enforcement Date Jul. 19, 2023)

Vision · Mission



Organization



Overview of MRTC in 2022

2. FEB.
2.16 Visiting seminar with UNHCR Korea Representative Office

4. APR.
4.11 The 1st round of immigration policy future forum in 2022

5. MAY.
5.12 MOU with Daegu Gyeongbuk Research Institute and Gyeongsangbuk-do Family Center
5.20 (Korean Association for Immigration Administration) Co-hosted the Spring academic conference

6. JUN.
6.8 Joint Immigration Policy Forum to commemorate the 15th Together Day
6.21 held Integrity Citizen Auditor Operation Council
6.23 Roundtable meeting with Vietnamese government official and IOM Vietnam
6.30 (UN Office of Counterterrorism) Participated in the joint research report publication ceremony

7. JUL.
7.25 The 2nd immigration policy research paper contest
7.28 The 1st Foreigner administrative public data utilization contest

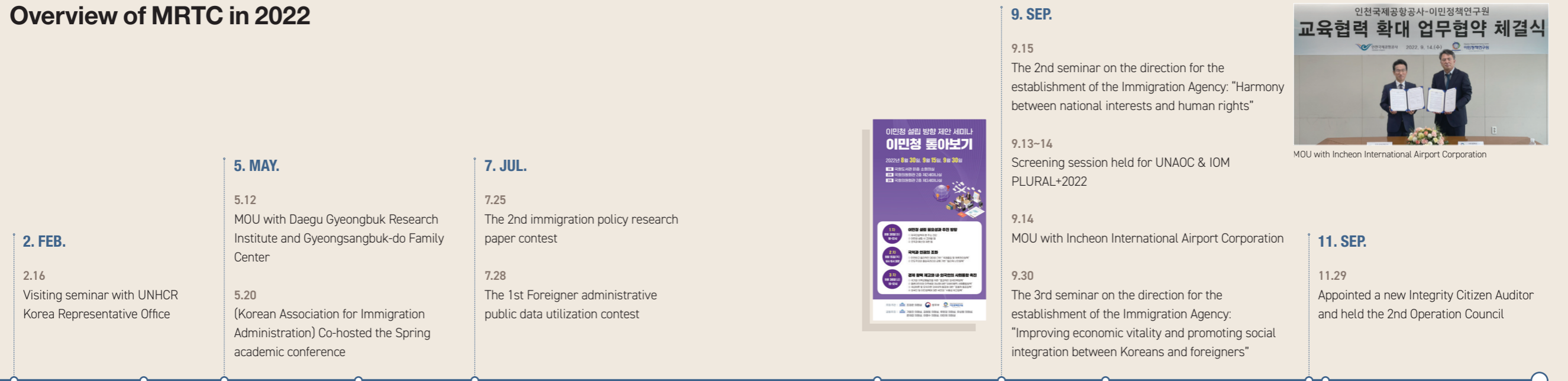
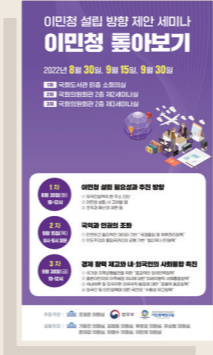





8. AUG.
8.16 LOI(Letter of Intent) for cooperation between MRTC and the Immigration Agency of Mongolia
8.22 (Korean International Migration Studies Association) Co-hosted the KIMSA seminar
8.30 The 1st seminar on the direction for the establishment of the Immigration Agency: "Necessity for the establishment of the Immigration Agency and its direction"

9. SEP.
9.15 The 2nd seminar on the direction for the establishment of the Immigration Agency: "Harmony between national interests and human rights"
9.13~14 Screening session held for UNAOC & IOM PLURAL+2022
9.14 MOU with Incheon International Airport Corporation
9.30 The 3rd seminar on the direction for the establishment of the Immigration Agency: "Improving economic vitality and promoting social integration between Koreans and foreigners"

10. OCT.
10.14 MOU with Seoul National University Asia Center
10.18 Visiting Seminar with Mekong regional experts
10.24~28 Participated as a collaborative institution in the "United Nations Office of Counterterrorism (UNOCT) Best Practices in Border Security Management Workshop for the ASEAN Region"

11. SEP.
11.29 Appointed a new Integrity Citizen Auditor and held the 2nd Operation Council

12. DEC.
12.8 - MOU with Sungkyul University
- Held the 13th Immigration Policy Forum, "Population Cliff, and Immigration Policies and the Challenges of the Immigration Agency in the Industry 4.0"
12.14~15 (Seoul Metropolitan Government) Co-hosted "Next generation immigration policy academy in 2022"
12.14 - Family-friendly certification re-certified by the Ministry of Gender Equality and Family
- Held 2022 employee reward ceremony
12.15 Received the Anti-Corruption and Civil Rights Commission Chairperson Award at the 2022 Fair Recruitment Best Practice Contest
12.21 Public hearing to establish the 4th Basic Plan for Immigration Policies

The 1st round of immigration policy future forum in 2022

Roundtable meeting with Vietnamese government official and IOM Vietnam representative

LOI for cooperation with the Immigration Agency of Mongolia

Visiting Seminar with Mekong regional experts

MOU with Incheon International Airport Corporation



PART 2

2022 MRTC HIGHLIGHTS

01. 4 Major News of MRTC in 2022	16
02. Research Projects	18
03. Education & Training Projects	30
04. Cooperation Projects	32

01. 4 Major News of MRTC in 2022

NEWS 1

MRTC co-hosted "An in-depth look at the Immigration Agency," 3 seminars on the direction for the establishment of the Immigration Agency

The MRTC held a seminar to discuss in depth the necessity, goals, and promotion plans of the establishment of the Immigration Agency jointly with the office of lawmaker Cho Jeong-hun and the Ministry of Justice. In the three-round seminar, experts from political circles, government, and academia gathered to assess and discuss the current state of Korea's immigration policies and discuss the need for the establishment of an Immigration Agency as a countermeasure for implementing advanced and systematic immigration policies, the areas that need to be addressed, and specific directions for implementation.

- (1st) Necessity for the establishment of the Immigration Agency and its direction
- (2nd) Harmony between national interests and human rights
- (3rd) Improving economic vitality and promoting social integration between Koreans and foreigners



NEWS 2

MRTC presented 「The 1st Contest for Utilization of Foreigner Administration Public Data」 MRTC Award

Hosted by the Ministry of Justice and co-organized together with the MRTC, the "1st Contest for Utilization of Foreigner Administration Public Data" was held to enhance public interest in foreigners and immigration and to increase the utilization of the related public data. The MRTC presented the 'MRTC Director's Award', an encouragement award, to participants who analyzed the characteristics of foreigner-concentrated areas and proposed measures to improve the lodging and accommodation environment for foreign workers in rural areas.



NEWS 3

MRTC co-operated 「Cultural Diversity Education for General Citizens in Seoul in 2022」

The MRTC conducted "Seoul City Cultural Diversity Education" from July 25, 2022 to December 20, 2022 in collaboration with the Seoul Metropolitan Government. As a general course, a 'Parent Communication Workshop' was conducted jointly with the Multicultural Education Support Center, and online contents for Seoul citizens and teenagers were produced to help ordinary citizens understand the necessity of immigration policies. In addition, as an intensive course, various types of education were planned and carried out to improve the cultural sensitivity of teachers in densely populated areas together with the adaptation writing teachers' meeting.



NEWS 4

MRTC received the Anti-Corruption and Civil Rights Commission Chairperson Award at the 「2022 Fair Recruitment Best Practice Contest」

The MRTC was selected as an excellent institution, leading the practice of fair recruitment in the 2022 Fair Recruitment Best Practice Contest hosted by the Ministry of Employment and Labor, and received the 'Chairman's Award' from the Anti-Corruption and Civil Rights Commission. On December 15, 2022, at the awards ceremony held at the Press Center in Jung-gu, Seoul, deputy director of the MRTC attended and received an award certificate.



Research Projects

MRTC contributes to the development of immigration policies through immigration-related surveys, research, advisory services and information exchange.



9
Research Report

1
Joint Research Report

4
Working Paper

10
Issue Brief

4
Consigned Research Report

02. Research Projects Performance

Research report

In-depth research dealing with various fields related to immigration policies, such as immigration control, sojourn management, nationality and social integration policies

Chief Researcher Dowon Kim | Co-researcher Jaewook Byeon

Immigration and Local Economic Growth: An empirical evidence from South Korea

This study investigates a relationship between immigration and local economic growth in South Korea. Using a panel of South Korean localities, we find that immigration has positive impact on local economic growth only in capital areas and mining and manufacturing sectors. This results are associated with localities where firms and factories are densed. In immigrant-populated area, immigration does not have additional effect on mining and manufacturing sectors. This result implies that each municipality and industry do not optimize foreign human resources in South Korea. To improve contribution of immigrants to local economy, governments should focus on policies for efficient allocation of immigrant human capital. Also,immigrants'should be recognized as members in a local society of host country, and their economic activities should be guaranteed stable and sustainable



- I . Introduction
- II . Literature Review
- III . Status analysis: Immigration and the local economy
- IV . Empirical analysis: Panel regression analysis
- V . Conclusion and Suggestions

Chief Researcher Dowon Kim | Co-researcher Jaewook Byeon, Chaemin Hyun

Which Immigrants Want to Stay Longer in a Host Country and Why? : An Evidence from South Korea

This study aims to answer the following two questions. The first question is 'which immigrant wants to stay longer in a host country.', and the second one is 'why he/she wants to stay longer in this host country.' For the purpose of this study, we establish a pooled dataset from 'Survey on immigrants' living conditions and labour force' and we use some basic empirical models. By using binary logit models, we find various factors such as immigrants' backgrounds, family and relatives, experiences in Korea, language skills are highly correlated with immigrants' intentions to stay longer, or to get the right of permanent residence or to be naturalized. This results can be used as basic evidences for developing immigration policies to enhance settlement conditions for immigrants and to improve the social integration level of Korean society.



- I . Introduction
- II . Literature Review
- III . Analysis of basic statistics
- IV . Analysis of the determinants of immigrants' intention to stay in Korea
- V . Conclusion and Suggestions

Chief Researcher Minjeong Park, Hyungcheal Ryu | Co-researcher Younghee Cho, Dowon Kim, Hunsung Jang, Minji Yoo, Kwangseok Kim, Yongjun Choi, Sungjo Ahn, Sunghoon Jung, Sungdug Park, Kangmin Lee

A Study on Immigration Policy in Response to the Population Crisis and Industrial Demand in Gyeongsangbuk-do

This study examines various fundamental materials to establish a proper direction for local government immigration policies that can respond to the population crisis and industrial demands in South Korea. Specifically, based on the results of the study, we suggest short-term and mid-to-long term primary strategies for local governments to reflect the domestic, foreign, and international policy trends regarding the changing population structure, the local industrial demands in various sectors such as agriculture, fishery, and manufacturing, as well as the distribution and characteristics of inflowing and settling migrants in Gyeongsangbuk-do. Moreover, we recommend conducting a more detailed factual survey and creating a locally-driven basic plan to promote more advanced regional immigration policies in the future.

Chief Researcher Chang Won Lee | Co-researcher Seori Choi, Dowon Kim, Kyounghee Moon, Bo-bae Kim

Immigration Policy in Response to Local ICT Labor Shortage in the Era of the 4th Industrial Revolution: The Case Study of Gyeongnam Changwon Smart Green Industrial Complex

The Korean government is taking steps to tackle the problem of declining population in non-metropolitan areas. One approach they're using is to boost the local economy and create quality jobs through the use of 4th industrial revolution technology. To achieve this goal, the government has initiated a project to transform manufacturing factories in local industrial complexes into smart factories. As a result, the demand for ICT professionals has been on the rise in these areas. Despite the increasing demand, many ICT professionals continue to leave non-metropolitan areas for job opportunities in metropolitan regions. As a solution, there's growing interest in using foreign ICT professionals as an alternative. This study focuses on the Gyeongnam Changwon Smart Green Industrial Complex and explores ways to source foreign ICT professionals to address changes in technology and labor demand resulting from smartization. The study also discusses limitations and challenges, taking into account the current local environment and capacity level.

Chief Researcher Min Yi Yoo

A Study on the Estimation of the Fiscal Size by Design Type of Immigration Fund for Specific Programs

Discussions on the Immigration Fund for Specific Programs (hereinafter referred to as the Immigration Fund) have been conducted to emphasize the validity and necessity of setting up the fund, but research on specific installation plans and estimation according to the fund design has been neglected. This study reaffirmed the validity and necessity of the immigration fund, and categorized the immigration fund by purpose and purpose based on cases of domestic and foreign fund establishment and expert surveys. In addition, income and expenditure by type were estimated. The



- I. Introduction
- II. Domestic and foreign policy trends according to demographic changes
- III. Demographic structure and immigration policies in Gyeongsangbuk-do
- IV. Industrial structure and immigration policies in Gyeongsangbuk-do
- V. Policy recommendations



- I. Introduction
- II. Demographic and industrial characteristics of Gyeongsangnam-do and Changwon-si
- III. Current status of smartization and labor demand in Gyeongnam-Changwon Industrial Complex
- IV. Response to and challenges of labor demand at Gyeongnam-Changwon Smart Industrial Complex
- V. Policy environment for the supply of foreign ICT manpower in local areas
- VI. Conclusion



- I. Introduction
- II. Discussion on the necessity and feasibility of immigration funds
- III. Overseas cases and types of

- immigration funds
- IV. Expert survey for the design of immigration funds
- V. Design types and estimation of immigration funds
- VI. Conclusion and suggestions on how to manage immigration funds

immigration fund can be divided into "immigrant social integration focus", "local win-win focus", and "employment win-win focus", and depending on the financial resources, 300 billion won to 452 billion won could be spent, and 245 billion to 371 billion won, respectively. This study is a policy study of prescription characteristics that suggests alternatives to the establishment of the immigration fund, and it is expected that it can contribute to the establishment and institutionalization of the fund.

Chief Researcher Seori Choi | Co-researcher Chang Won Lee, Kyungju Kim, Chaemin Hyun

Suggestions for Permanent Immigration Policies of the Republic of Korea

Commemorating the 20th anniversary of permanent residency (F-5 visa) in Korea, this study examines the current status of permanent immigration system in Korea and seeks directions of policy improvement. It attempts to analyze the permanent immigration system by migration pathways, considering the ways in which the permanent immigration system has developed over the years. Using the data from interviews with permanent residents and applicants for permanent residency, this study identifies the difficulties facing them in acquiring permanent residency and explores the meaning of permanent residency from their perspectives. Finally, policy suggestions are made based on the opinions of experts in the field.

Chief Researcher Seori Choi | Co-researcher Chang Won Lee

A Study on the Establishment and Utilization of Immigration Administration Data to Support Immigrants Selection and Settlement

This study reviews the status of data in the domain of immigration and proposes policy tasks for data-based administration in immigration. To achieve its research objective, the study examines the current status of the data generated according to the migration phase by public institutions, including central departments and local governments, and related organizations. The study also analyzes how these data are currently being utilized. The migration phase is broadly categorized into three phases: selection (qualification review to grant prospective immigrants the status of sojourn), settlement, and integration.



- I. Introduction
- II. Theoretical background and international trends
- III. Changes in the permanent resident visa system in Korea
- IV. Current status of permanent residents in Korea
- V. Rights and obligations of permanent residents in Korea
- VI. Expert survey for improvement of domestic permanent resident visa system
- VII. Conclusion



- I. Introduction
- II. Theoretical background and international trends
- III. Changes in the permanent resident visa system in Korea
- IV. Current status of permanent residents in Korea
- V. Rights and obligations of permanent residents in Korea
- VI. Expert survey for improvement of domestic permanent resident visa system
- VII. Conclusion

Chief Researcher Hye Kyoung Lee | Co-researcher Younghee Cho, Bokseon Hwang

A Study on the Current Status Improvement Plan from the Perspective of Immigration Policy according to the Autonomous Police System

As the number of foreigners residing in Korea increases, the importance of safety policies for areas with a high concentration of foreigners and foreign affairs safety zones is growing. It means that the specifics of the work related to foreign nationals and the characteristics unique to regions should be considered as much as that. However, the specifics of foreign affairs and occupational professionalism were excluded from the process of introducing the local police service, resulting in a uniform organizational restructuring. Thus, this study aims to analyze the influence of the changes in foreign affairs that separate the police work related to foreign affairs and the criminal investigation of foreign nationals in the light of the introduction of the local police service from the perspective of immigration policy. To this end, the status of foreign affairs was analyzed with a focus on organizational efficiency, occupational professionalism, and a cooperative relationship with the immigration office and foreign government offices. Subsequently, the perception of police officers regarding overall foreign affairs was investigated, and improvement measures were derived on the basis of the outcomes of in-depth focus group interviews conducted with foreign affairs officers of densely populated areas and foreign affairs safety zones. This study identified the direction of improvement from structural, executive, and environmental aspects regarding the police service's performance of foreign affairs for managing local safety from the perspective of immigration policy. Moreover, the directions for improving the system for strengthening cooperation with collaborating organizations, such as the immigration office and foreign government offices, in terms of managing order in residency were proposed as well. The results of this study can be used as basic data when establishing improvement measures within the police organization that reflect the characteristics of the regions for managing order in residency, a field of immigration policy. In addition, these findings will serve as policy information data required to improve systems for allocating roles and building cooperative systems, etc., between the immigration office and foreign government offices, which are major collaborating organizations in carrying out foreign affairs duties of the police.

Chief Researcher Min Yi Yoo | Co-researcher Seori Choi, Dowon Kim, Minjeong Park

A Study on the Influencing Factors of People's Perception of Ethnic Korean

With about 50% of long-term foreigners accounting for ethnic Korean as of 2021, the report investigated Koreans' perceptions of ethnic Korean and explored what factors affect these perceptions. In addition to general perception influencing factors (social demographic factors, conflict and threat factors, contact factors), images exposed in the media and age (the higher the age, the more positive) were particularly effective variables. In addition, it was verified that preference for ethnic Korean policy also works as a moderating effect in the above two variables. Therefore, the policy of ethnic Korean is effective when it is based on a positive perception of ethnic Korean.



- I. Introduction
- II. Discussion of immigration-related data
- III. Current status of immigrant selection process data and improvement plans
- IV. Current status of immigrant settlement process data and improvement plans
- V. Data status and improvement plans for gauging immigrant integrity performance
- VI. Conclusion



- I. Introduction
- II. Review of major theories and preceding studies on the perception of immigrants
- III. Research design
- IV. Results of basic statistical analysis on the perception of immigrants of Korean descent
- V. Analysis of the relationship between awareness and influence on immigrants of Korean descent among Korean nationals
- VI. Conclusion

Joint research report

Chief Researcher the United Nations Counter-Terrorism Centre (UNCCT) | Co-researcher MRTC(Min Yi Yoo), IOM, WCO,Stimson Center, INSS

Addendum to the Good Practices in the Area of Border Security and Management in the Context of Counterterrorism: The Republic of Korea Model

On March 11, 2020, the World Health Organization (WHO) declared COVID-19 a pandemic, causing numerous countries to close their airports, ports, and land borders in inconsistent and frenzied ways to try to contain the spread of the virus. Even such longstanding border security and management policies as the Schengen Arrangement in Europe were called into question, as global infection rates skyrocketed in the first few months, and continued to ebb and resurge throughout the following years. As a result, international travel restrictions varied widely from country to country throughout the pandemic and shifted frequently as governments struggled to find the right mix of precautions to provide their domestic constituents with a sense that the situation was under control and that foreign goods and travelers were not contributing to the spread.

While many countries employed temporary (or in some cases, prolonged) border closures or blanket bans of visitors from certain cities, regions or states, the Republic of Korea (ROK) was heralded for its ability to quickly respond and adapt to the pandemic conditions without severe disruptions to daily life, the functioning of democracy, or border management. Its all-of-government approach to pandemic management was aided by a strong counterterrorism infrastructure that included institutions, processes and channels of communication that allowed for swift inter-agency cooperation and responses. Being able to increase health and security screening policies and procedures as part of pandemic-era border security management allowed the country to keep its main airports and ports fully operational, without major foreigner-driven outbreaks in the country.

This compendium seeks to highlight the good practices the ROK employed to adapt its border security management in a time of global crisis, while also providing recommendations for how other countries can strengthen and dynamize their counterterrorism and border security practices to be better equipped to respond to evolving transnational security threats.



- I. Preface
- II. Good Practices and Recommendations
- III. Introduction
- IV. Part1: The Republic of Korea's Counterterrorism Good Practices for Border Security and Management
- V. Part2: The Republic of Korea's COVID-19 Pandemic-Related Good Practices for Border Security and Management
- VI. Conclusion

Working paper

Basic research for the development of immigration policies that academically cover various migration-related topics in politics, society, and economy

Chief Researcher Juyeun Lee

Occupational Injuries and Diseases in Migrant Workers in South Korea: The Gender Perspective

This study aimed to identify the risk factors for occupational injuries and diseases, and the predictors of the compensation approval of claims with regard to gender characteristics. This cross-sectional study analyzed 71,871 cases of "the status of occupational injuries and diseases for migrant workers (2007~2018.9.)" compiled by the Korea Workers Compensation and Welfare Services. After identifying the overall data structure by applying the results of machine learning hierarchical cluster analysis, logistic regression analysis was conducted regarding occupational accident deaths and compensation authorization. As a result, the analysis confirmed the necessity of gender-stratified analysis. While the risk factors of occupational accident deaths based on the machine learning random forest method are injured part, type of injury and disease, and nationality, it confirmed that industry was a more important factor than nationality in the case of female migrant workers. Furthermore, the study confirmed the order of importance of the predictive factors of the approval of the compensation claims of workers using random forest methods as follows: type of injury and disease, claims for injuries, and injured part. For male migrant workers, nationality was an important predictor rather than the injured part. This study suggested that the gender perspective is required for analyzing the occupational injuries and diseases of migrant workers to accurately elucidate the current situation.

Chief Researcher UNHCR Representation in the Republic of Korea

Cooperation between UNHCR and State Authorities to Enhance the Expertise of Refugee Status Determination Officers

With the number of forcibly displaced worldwide exceeding 100 million, the number of refugee status applicants in need of international protection is also increasing, requiring States to more actively provide appropriate protection through refugee status determination (RSD) procedures. This brief introduces cases in which the UNHCR cooperated with States to strengthen the capacity of RSD procedures. In particular, it focuses on the cases of cooperation with the Authorities of the United Kingdom, Ireland, Iceland and Italy with particular emphasis on the Quality Initiative Projects, presenting the importance of cooperation with UNHCR for more effective development of the RSD procedures. Moreover, this paper introduces UNHCR's education and training materials for capacity building of RSD procedures, examining major issues for the quality improvement of RSD.



- I. Introduction
- II. Research method
- III. Research results
- IV. Conclusion



- I. Introduction
- II. UNHCR's cooperation, involvement and oversight function of UNHCR in the refugee status determination review processes of a state party
- III. A study on specific cases of collaboration between UNHCR and states
- IV. UNHCR's refugee status determination review competency development and training
- V. Conclusion

Chief Researcher Juyoung Jang

A Multilevel Analysis of Attitudes toward Refugee Reception in Local Contexts

This study investigated the associations of individuals' attitudes toward refugee reception with individuals' sociodemographic characteristics, perspectives on refugees, and the characteristics of local immigrant populations, considering regional contexts. The study analyzed responses of 3,999 Korean natives from 200 areas (i.e., cities, counties, and districts) collected as parts of the Survey on Perceptions and Attitudes towards Asylum Seekers and Refugees in South Korea by MRTC and KIHASA. A multilevel model revealed that respondents' areas explained about 6% of the variance in the attitudes toward refugee reception. The proportion of migrant workers in the local immigrant population was negatively associated with the attitude toward refugee reception. The degrees of association of individuals' attitudes toward refugee reception with perceived socioeconomic threats, criminal threats, and economic contributions of refugees varied across areas. Future studies should further investigate the causes of the differences due to local contexts.

Chief Researcher Juyoung Jang | Co-researcher Sookyung Kim

Foreigners' Depression during the COVID-19 Pandemic in South Korea

This study examined factors relating to feeling depressed during the COVID-19 era among Korean natives and foreigners in Seoul, Korea. Seoul Survey 2020 and 2021, which surveyed both Korean and foreign residents of Seoul about their experiences during the pandemic, were used for analyses. First, we compared the influences of sociodemographic characteristics on feeling depressed among Korean natives and foreigners. Second, we investigated the influences of health-related factors and social adjustment and relationship factors on foreigners' feelings of depression. The economic impact of COVID-19 had a significant influence only on Korean natives' feelings of depression in 2020 but also explained foreigners' feelings of depression in 2021. Foreigners' feelings of depression were explained more by health-related factors and their social adjustment and relationships than socioeconomic characteristics. Policy implications are suggested.



- I. Introduction
- II. Research method
- III. Analysis result
- IV. Conclusion



- I. Introduction
- II. Literature Review
- III. Method
- IV. Results

Issue brief

Introductory material that reflects the policy demand of migration-related topics; its purpose is to introduce facts about policies and phenomena, raise controversial issues, and/or present new policies.

Chief Researcher Min Yi Yoo

Immigration Policy Pledge for the 20th Presidential Election of the ROK: Analysis by political party

This brief analyzed the contents of the interviews with the representatives of the political parties, and summarized the positions related to immigration policies of each party on the basic perspectives, laws and systems. The analysis results show that although there were common positions by party, the differences were generally striking. The People Power Party insisted on the need for a "mainstreaming policy" that selectively inflows migrants based on their contribution to Korean society, but does not differentiate the migrants from Koreans. On the other hand, the Democratic Party of Korea and the Justice Party insisted that the influx of migrants should be gradually expanded for reciprocity or humanitarian purposes in line with Korea's standing in the international community.

In addition, these two parties basically took the position that migrants were a socially underprivileged group in terms of discrimination and exclusion. However, the two parties had different opinions on adaptation and integration into Korean society. The Democratic Party emphasized the need for immigration policies based on national consensus and a unified response at the national level (ex. establishment of an Immigration Agency, etc.). On the other hand, the Justice Party put more emphasis on integration based on community thinking rather than institutional systems. Nevertheless, all three parties agreed on the need to establish a dedicated administrative agency that specializes in immigration (foreigner/multicultural) policies in line with the increase in migrants and the expansion of their social influence.

Chief Researcher Min Yi Yoo

Immigration Policy Pledge for the 20th Presidential Election of the ROK: Analysis by presidential candidate

This brief was intended to comprehensively analyze the perspectives and direction of immigration policies of major political parties, as well as presidential candidates and specific countermeasures ahead of the 20th presidential election. Since migrants are not included in the voters in the presidential election, and some immigration policies can cause conflicts with Korean nationals, there was a limit to their inclusion as major pledges. Therefore, in order to analyze the perspectives of the presidential candidates on immigration policies, in addition to the officially published pledges, the candidates' social media, debate remarks, and other written and interview remarks were used as data for analysis. Among the presidential candidates, candidates Lee Jae-myung, Yun Seok-yeol, and Sim Sang-jung's pledges were analyzed. The results of the analysis indicate that Candidate Shim Sang-Jung was expected to bring about the most changes in terms of overall reorganization of the basis for immigration policies, such as the establishment of a dedicated immigration organization and the enactment/revision of related laws.

However, in the individual approach by migrant type, questions remained as to whether concrete implementation was possible due to the lack of relevant pledges. Candidates Lee Jae-myung and Yoon Suk Yeol both identified immigration policies from a passive perspective, but candidate Lee had a strategic difference in that he would resolve migrants issues by making institutional improvements and candidate Yoon through strengthening support. Nevertheless, both candidates did not place immigration policy as



a high priority on the national agenda. Although elections are a time to appeal to voters about the qualities of a candidate, it is also an opportunity to set milestones for the country to move forward and explain specific measures to implement them. Considering that immigration policies affect various social issues in Korea, such as population, economy, industry, culture, and social integration, they should be the subject of deliberation by state administration after the election..

Chief Researcher Minjeong Park

Measures to strengthen linkage between permanent residence and nationality to attract exceptional talent

Korea has consistently selected 'attracting excellent talent' as a key initiative since the '1st Basic Plan for Immigration Policies' established in 2008 and has been promoting it for more than ten years. However, the rate of permanent residency or naturalization through the path of excellent talent is very low. Cases of major countries indicate that they are promoting preferential policies such as granting special permanent residence status and shortening the duration for processing permanent residence status to attract talented immigrants.

In order for the Korean government to expand the more effective attraction and settlement of excellent talent, ① a policy approach from the perspective of integration, ② integrated management of permanent residency and nationality acquisition from the perspective of citizenship, ③ securing a path for changing residence status for excellent talent, and exploring a separate path for changing preferential residence status with reference to overseas cases, ④ cooperation with local communities such as regional immigration offices and local governments, ⑤ organization reshuffling for efficient operation and review of permanent residency and nationality systems, ⑥ customized settlement support at the regional level as well as institutional and policy improvements such as early intervention through the provision of integrated services should be proactively considered.

Chief Researcher Dowon Kim

Foreigners' Participation in Local Elections in South Korea: An Insights from Statistical Analysis

Starting with the 4th local elections in 2006, South Korea granted qualified foreigners the right to vote in local elections through the revision of the Public Official Election Act. Suffrage for foreigners is highly restricted, requiring fulfillment of various requirements such as residence status and duration. Consequently, only a small fraction of the approximately 2 million foreigners residing in Korea have obtained suffrage. Nonetheless, negative public opinions regarding foreigners' voting rights and participation in domestic politics have emerged in recent years.

This brief examines the actual participation of foreigners residing in Korea in local elections, using related statistical data, in anticipation of the 8th South Korean local elections in June 2022. Additionally, we aim to foster contemplation on their significance in current domestic elections and their potential impact on future elections and politics in South Korea.



Chief Researcher Minjeong Park | Co-researcher Dowon Kim

Policy issues seen through the spatial distribution of foreigners in Seoul: analysis of the living population of long-term foreigners

In order to identify the actual spatial distribution of foreigners in Seoul, this brief comparatively analyzed the long-term foreign residents living population/registered population in administrative statistics - data constructed by the city of Seoul. The results of the analysis show that the distribution of the living population and registered population in each district in Seoul showed a similar trend overall; as for the living population, the degree of concentration in certain regions such as the southwest region was lower than that of the registered population, and generally showed a more even distribution.

As for the distribution by administrative "Dong", at night (as of 03:00), immigrants of Korean descent, in areas such as Daerim and Guro-dong, are concentrated, and during the day (as of 15:00), the foreign population is concentrated in university districts and business districts such as Sinchon, Hyehwa, and Yeoksam-dong. It is believed that the results of this analysis can be used as basic data for providing practical and efficient urban and administrative services, such as the selection of locations for foreigner-related facilities.



Chief Researcher Seori Choi

Policy suggestions to secure skilled foreign labor in the fishing industry

In recent years, demographic changes and regionally unbalanced development have become national policy agendas to be addressed. In this issue brief, the employment of migrants in the fishing industry was analyzed not only from the perspective of meeting temporary labor market demand, but also with the goal of fostering and stably securing them as skilled workers necessary to support the industry that occupies an important part of Korean society. Currently, the government allows skilled migrant workers to work in Korea for a longer term by changing their status of residence.

However, migrant fishery workers often leave for other industries, and under the current system, it is difficult for these migrants to find long-term employment in Korea. Therefore, it is necessary to reflect the reality of the domestic fishing industry in the operation of migration policies, and to seek ways to link the regionally specialized visa, which is being explored by the government, with the fishing industry.

Chief Researcher Seori Choi

Discussion of skills in migration policies: The case of care labor

Housework and nursing for the sick are classified as so-called 'care work'. However, as caring has traditionally been understood as a woman's role in the family, there has been a widespread perception that it is regarded as an innate feature and does not require skills. Due to the rapid change in the domestic demographic structure, it is predicted that a significant number of workers such as domestic workers and caregivers, will be introduced from abroad in the future.

In this respect, this issue brief looked at the concept of skills in migration policies, focusing on care work, and reconsidered the dichotomous classification of migrants workers according to their skills.

Chief Researcher Seori Choi

A brief consideration on "overstay" and "legalization" of migrants

The number of overstayers, which has gradually increased since the 2010s, recently reached its highest level around the time of the COVID-19 pandemic. Although the presence of overstayers was a public health concern in the context of the spread of the infectious disease in recent years, in the situation where cross-border movement of people was restricted, they have also filled a vacuum in the labor market. In this issue brief, I looked at the recent government policies in response to the overstay of migrants, and questioned the one-off "legalization" option raised by some.

Chief Researcher Seori Choi

Discussion of the need for designing the mid- to long-term employment-based migration policies in the agricultural sector

Over the past 10 years, although employment-based migration policies in the agricultural sector have changed significantly, illegal recruitment and employment are prevalent in the agricultural sector currently. In addition, the problem of leaving the workforce assigned to the agricultural sector to go to other industries is still unresolved. Moreover, a comprehensive system to respond to the labor demand in agriculture in the short and mid- to long-term has not been considered. In this issue brief, I discussed ways to redesign the current employment-based migration policies in the agricultural sector to prevent illegal recruitment and employment in the sector and departure to other industries.

Chief Researcher Minjeong Park

Measures for compulsory initial orientation course in line with the increased attraction of foreign students

As of December 2022, the number of international students has increased to account for 11.7% of all long-term foreign residents. Due to the rapid population decline, the need for attracting foreign students as excellent talents that settle here has gone up. On the other hand, problems such as illegal alienation and involvement in crimes have also increased. In response to these issues, the importance of the Immigrant Early Adaptation Program, which guides them on the basic laws and order of Korean society and provides information on the process of changing their status of residence to permanent residency and naturalization, has become very important.

Nonetheless, participation is low, with only 4% of those sought and trained completing the program. A recent immigrant initial orientation course briefing session conducted a survey of 269 university officials in charge of foreign students, and analyzed whether they were aware of the program, participation status, and improvement plans. About half of the respondents were aware of the program, and the ratio of agreeing to the intention to participate and compulsory participation was high, suggesting the need for active publicity of the program. In particular, the demand for education on 'basic information on changing the sojourn status' and 'day-to-day laws and violations related to international students' was the highest. As recent changes are being made to attract talented immigrants, such as regionally specialized visa projects and fast-tracking excellent talent, it is time to actively respond to the needs for the mandatory initial orientation course for international students.



Education and Training Projects

MRTC promotes understanding of migrants and immigration related issues through social integration programmes and educational training.



3
Public Officials

8
Foreign Residents

11
Private Activist

4
Next-generation Scholars

03. Education and Training Projects Performance

Performance of basic education projects

The MRTC conducts education and training to promote understanding of domestic and foreign immigration policies and to foster related experts. We continue to provide education for public officials, civil activists, foreigners residing in Korea, and undergraduate/graduate students, and are strengthening collaborative education with local governments.

In 2022, the MRTC cooperated with the Korea Immigration Service (KIS) within the Ministry of Justice to contribute to attracting outstanding talent and social integration of permanent immigrants by conducting "customized integrated citizenship education for permanent residents and naturalized citizens" and "briefing sessions for the fast-track system for outstanding talent."

Table 1. Basic education projects

Category	Title	Date
Public officials	Education for public officials of Seoul Metropolitan Government (1st, government officials in charge, employees of subsidiary corporations, public corporations, and public-invested corporations)	2022.9.29.
	Education for public officials of Seoul Metropolitan Government(Seongdong Cultural Foundation, 2nd-3rd)	2022.10.7.
Foreign residents	[Ministry of Justice] Integrated civic education pilot project tailored to permanent residents and naturalized citizens (exceptional talents, 1st)	2022.5.27.
	[Ministry of Justice] Integrated civic education pilot project tailored to permanent residents and naturalized citizens (Applicants for naturalization interview, 2nd)	2022.6.24.
	[Ministry of Justice] Integrated civic education pilot project tailored to permanent residents and naturalized citizens (General naturalized permanent residents, 3rd)	2022.6.26.
	Education for the Seoul City Foreign Residents Council	2022.8.18.
	[Ministry of Justice] Fast-track briefing session and integrated citizenship education for exceptional talent (1st-4th)	2022.11.17./11.21./11.28./12.2.
Private activist	Education to enhance expertise of family center workers in cities and counties in Gyeongsangbuk-do	2022.6.8.-9.
	Workshop for the heads of Gyeongsangbuk-do Family Centers	2022.6.20.-23.
	[Ministry of Justice] Education for fostering instructors who conduct integrated citizenship education tailored to permanent residents and naturalized residents (social integration instructors, 1st-2nd)	2022.6.21.
	[Ministry of Justice] Education for fostering instructors who conduct integrated citizenship education tailored to permanent residents and naturalized residents (initial orientation course for immigrants instructors, 3rd, 6th)	2022.6.27.-28.
	[Ministry of Justice] Education for fostering instructors who conduct integrated citizenship education tailored to permanent residents and naturalized residents (compliance education instructors, 4th,5th,7th)	2022.6.27.-28. / 8.3.
	Leadership improvement training for middle managers in Gyeongsangbuk-do	2022.11.15.-16.
	Seminar for preparing policies and support plans for foreign residents in Gyeongsangbuk-do	2022.11.21.
Next-generation scholars	Next generation immigration policy academy in 2022	2022.12.14.-15

● Performance of consigned education projects

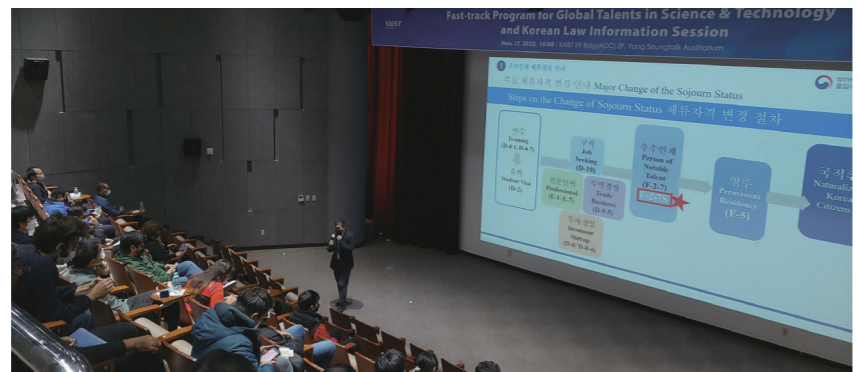
The MRTC runs the initial orientation course for Immigrants (1st support group), providing education for smooth settlement in Korean society, including information on the laws/regulations of Korean society and living-related information to international students in the early stages of their arrival in the country, foreigners in densely populated areas, and foreign celebrities. In 2022, we selected and trained qualified instructors who speak different languages to improve the opportunity for program applicants to take classes in their native languages. In addition, various efforts have been made to provide effective programs for participants, such as revising textbooks for international students and foreign celebrities, and creating standard lecture plans for instructors.

In addition, the MRTC conducted on/offline training to promote cultural diversity for domestic children/youth and general citizens by providing education on understanding cultural diversity offered by the government of Seoul. In addition, by holding communication workshops between parents of students with migrant backgrounds and Korean parents, we created a venue to help better understand each other's cultures. In addition, customized in-depth education called "Tomorrow Opened with Diversity!" was conducted with teachers in areas where foreign residents are concentrated. By carrying out these programs and projects, the MRTC has contributed to the resolution of negative perceptions such as prejudice and discrimination against foreigners/ multiculturalism and the enhancement of mutual understanding of cultures.

Table 2. Consigned education projects

Commissioned by	Title	Period
Ministry of justice	The 2022 Initial Orientation Course for Immigrants (1st Support Unit)	2022.1.1.~12.31.
	- Operated the courses: 213 rounds in total, 8,157 participants completed - Operated instructor training and refresher training for Initial Orientation Course for Immigrants - Developed textbooks and standard lecture plans	
Seoul metropolitan government	Cultural diversity understanding education for general citizens in 2022	2022.7.25.~12.20.
	- 35 rounds in total, 797 people participated	

Foreign residents:
Fast-track briefing session and integrated citizenship education for exceptional talent (1st)



Private activist:
Seminar for preparing policies and support plans for foreign residents in Gyeongsangbuk-do



General citizens:
(Education for understanding cultural diversity) Ansan city tour



General citizens:
(Education for understanding cultural diversity) The Growth and Current Issues of Migration Background Children



Cooperation Projects

MRTC promotes various cooperative projects by building further partnerships with experts and relevant organizations.



Domestic Cooperation

14

Government Agencies

5

Domestic Networking Activities

4

Relevant Institution (MOU)

1

Others

2

Consigned Cooperation Project

International Cooperation

3

International Organization

5

Global Networking Activities

1

Consigned Cooperation Project

04. Cooperation Projects Performance

Performance of domestic cooperation

The MRTC is promoting various cooperation projects to serve as a hub for immigration policy research and training. We are actively building collaborative system between the central government, local governments, related organizations/field experts and private organizations (public-private-academia) to use as basis for conducting high-quality immigration policy research.

In particular, in 2022, the MRTC made efforts to form a public forum for the populace to help set a new direction for Korea's immigration policies in accordance with the rapid changes in the international, political & economic landscape in the post-COVID-19 era. By hosting "The 4th Public Hearing on the Establishment of the Basic Plan for Immigration Policies" and three rounds of the "Seminar on the Establishment of the Immigration Agency" prepared with the National Assembly, we tried to hear various voices from 'public-private-academia' related to immigration policies and reflect them in our policy research.

Joint Immigration Policy Forum to commemorate the 15th Together Day



Table 1. Domestic cooperation

domestic	Category	Title	Date	
MRTC	Government agencies	[Ministry of Justice] Held meeting to discuss introduction of region-specific long-term stay visa	2022.2.9.	
		Held the 1st round of immigration policy future forum in 2022 (Park Seong-joong, member of the National Assembly)	2022.4.11.	
		[Jeju Special-Governing Province] Held consultation for improved real estate investment immigration system	2022.4.7	
		[Seoul Metropolitan Government] Held 2022 Seoul Metropolitan Government collaboration plan meeting	2022.4.27.	
		[Ministry of Justice, National Multicultural City Council] Participated in the 6th foreign policy council	2022.4.29.	
		[Ministry of Justice, National Multicultural City Council] Participated in the 6th foreign policy council	2022.4.~8.	
		[Seoul Metropolitan Government] Published an issue brief titled, "Policy issues found in the spatial distribution of foreigners in Seoul"	2022.5.~6.	
		[Ministry of Justice] Meeting for conducting permanent naturalized residents-tailored education and linking with the local community	2022.6.13.	
		[Ministry of Justice] The 2nd immigration policy research paper contest	2022.7.~10.	
		Seminar titled, "Sustainable development of rural areas: foreign workers as partners" (Members of the National Assembly Yoon Jae-gahp, So Byeong-hoon, Kim Seung-nam, Shin Jeong-hoon, Ahn Ho-yeong, Yun Joon-byeong, Joo Cheol-hyeon, Jo Jeong-hoon, Yoon Mi-hyang)	2022.8.31.	
		The 1st seminar on the direction for the establishment of the Immigration Agency, "Necessity for the establishment of the Immigration Agency and its direction" (Members of the National Assembly Jo Jeong-hoon, Gi Dong-min, Kim Hyeong-dong, Ryu Ho-jeong, Yoo Sahng-beom, Yoon Jae-gahp, Lee Myeong-soo, Lee Tahn-hee)	2022.8.30.	
		The 2nd seminar on the direction for the establishment of the Immigration Agency: "Harmony between national interests and human rights" (Members of the National Assembly Jo Jeong-hoon, Gi Dong-min, Kim Hyeong-dong, Ryu Ho-jeong, Yoo Sahng-beom, Yoon Jae-gahp, Lee Myeong-soo, Lee Tahn-hee)	2022.9.15.	
		The 3rd seminar on the direction for the establishment of the Immigration Agency: "Improving economic vitality and promoting social integration between Koreans and foreigners" (Members of the National Assembly Cho Jeong-hun, Ki Dong-min, Kim Hyeong-dong, Ryu Ho-jeong, Yoo Sang-beom, Yoon Jae-gap, Lee Myeong-soo, Lee Tan-hee)	2022.9.30.	
		Seminar on, "The era of local extinction: the meaning and challenges of introducing local government immigration policies"(Members of the National Assembly Lee Myeong-soo, Lee Won-taek)	2022.9.20.	
		Domestic networking activities	[Incheon International Airport Corporation] MRTC invitational visit meeting	2022.2.21.
			Signed MOU between MRTC, Daegu Gyeongbuk Research Institute and Gyeongsangbuk-do Family Center	2022.5.12.
			Signed MOU between MRTC and Incheon International Airport Corporation	2022.9.14.
Signed MOU between MRTC and Seoul National University Asia Center	2022.10.14.			
Signed MOU between MRTC and Sungkyul University	2022.12.8.			
Relevant institution (MOU)	[Korean Association for Immigration Administration] Co-hosted the Spring academic conference	2022.5.20.		
	[Korean Association for Policy Studies] Organized a joint session at the Summer academic conference	2022.6.17.		
	Co-hosted the Summer international academic conference	2022.7.14.		
	[Korean International Migration Studies Association] Co-hosted the KIMSA seminar	2022.8.22.		
Others	[Multicultural TV] Shared materials related to the production of the documentary "The Age of Migration"	2022.2.15.		
Consigned	Government agencies	[Ministry of Justice] Held the Immigration Policy Forum to commemorate the 15th Together Day	2022.6.8.	
		[Ministry of Justice] Held a public hearing to establish the 4th Basic Plan for Immigration Policies	2022.12.13.~30.	

Seminar titled, "Sustainable development of rural areas: foreign workers as partners"



Visit meeting with recipients of award of the 2nd immigration policy research paper contest



MOU signed between MRTC and Sungkyul University



Performance of international cooperation

The MRTC has been actively engaged in cooperation with various international organizations on immigration policies. In 2022, by holding meetings with IOM, UNHCR, and the Vietnamese government, we shared global migration and refugee trends, and had in-depth discussions on Korea's policy measures regarding related issues in the international community. In addition, by participating in a case study on efficient border management during the COVID-19 pandemic with the UN Counterterrorism Center, we shared Korea's border management status and achievements with the international community.

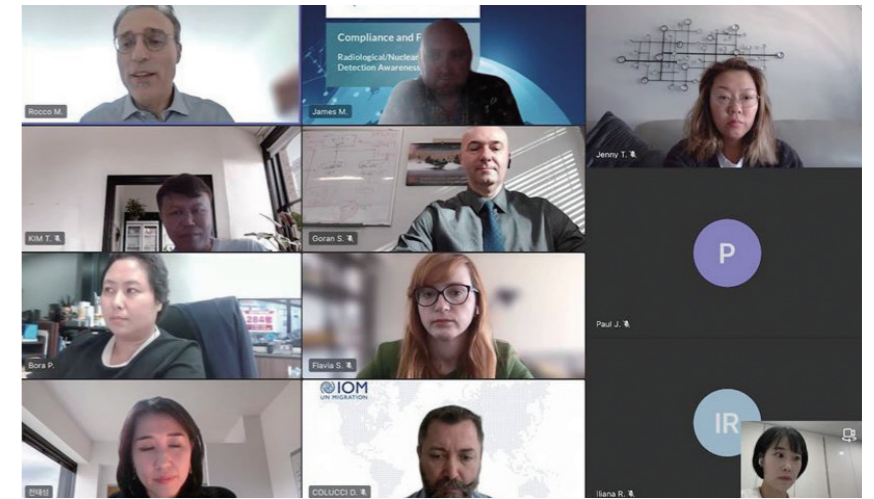
Table 2. International cooperation

International	Category	Title	Date
MRTC	International organization	[Ministry of Justice, UNHCR Korea Representative Office] Held the MRTC visit meeting	2022.2.16.
		[Vietnamese government official, IOM Vietnam] Held a roundtable meeting with Vietnamese Migrant Health Working Group and IOM Vietnam	2022.6.23.
		[UNHCR Korea Representative] Held a roundtable meeting	2022.11.10.
	Global networking activities	[IFMS] Held a meeting on participation in the 2023 International Forum on Migration Statistics	2022.4.5.
		[UN Office of Counterterrorism] Participated in the joint research report publication ceremony	2022.6.30.
		[UN Office of Counterterrorism] Held a brainstorming meeting to hold regional workshops on best practices in border management	2022.8.3.
		[Expert in Laos, Myanmar, Vietnam, Cambodia, and Mekong region of Thailand] Held a visit meeting	2022.10.18.
	[UNAOC & IOM] Held a screening session for PLURAL+2022*	2022.9.13~14.	
Consigned	Others	[KOICA] PMC service commissioned for immigration administrative capacity building project in Laos	2019.11.~ 2023.7.31.

*** International Youth UCC Festival PLURAL+**

PLURAL+ is a short film festival to encourage young people to present creative perspectives on issues such as immigration, diversity, social inclusion, and xenophobia prevention. Entries are judged by more than 50 sponsors worldwide, including UNANOC, IOM and MRTC.

UN Office of counterterrorism: Brainstorming meeting to hold regional workshops on best practices in border management



Roundtable Meeting with Vietnamese Migrant Health Working Group and IOM Vietnam



Screening session for UNAOC & IOM PLURAL+2022



- ① When We Finally Understood (Isabella Jinglan Omedas Jiméne)
- ② Talking Murals (Joshua Alatrisme)
- ③ XENOPHOBIA (Kesia Prates de Amorim)



PART 3 MRTC'S INITIATIVES IN 2023

01. Research Projects	42
02. Education & Training Projects	44
03. Cooperation Projects	46

01. Research Projects

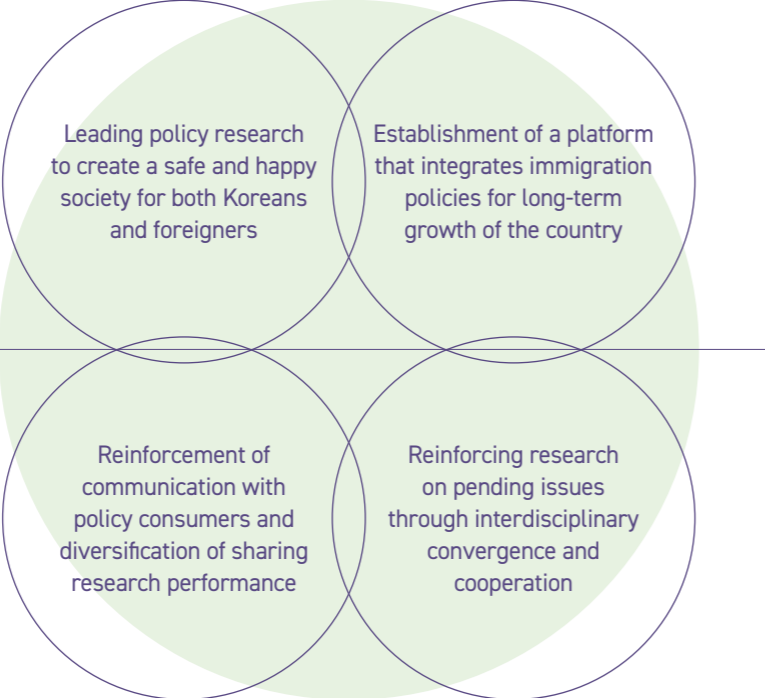
2023 is the first year of implementation of the 4th Basic Plan for Immigration Policies (2023-2027), and in consideration of the pending issues, including demographic structure change; regional extinction crisis; acceleration of Industry 4.0 and a change in demand for foreign workers; and the direction of international immigration cooperation and the impact of Korea's immigration policies due to the rise of the Asian region after the pandemic, the MRTC plans to conduct research with the goal of establishing leading and future-oriented immigration policies that can actively respond to changes in the domestic and foreign immigration policy environment facing Korean society.

The key research initiatives to be promoted in 2023 are planned according to the six research areas of the MRTC (immigration law/administration, immigration economy, international migration cooperation, social integration, human rights/refugees, and immigration trend analysis), and in particular, the MRTC plans to strengthen data and evidence-based immigration policy research.

Strategic Goal

Expansion of research on future-oriented immigration policies and dissemination of outcomes

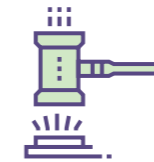
Strategic Initiatives



Key research initiatives for 2023

01

Immigration law & administration



- A study on reorganization of entry/departure and the immigration policy promotion system
- A study on entry/departure and immigration policy agenda management through Big Data analysis

02

Immigration economy



- Immigration and public finance: A study on immigration and the government's social welfare spending
- A study on the improvement of the economic immigration system in response to current demand and future change.

03

Analysis of immigration trends



- A study on the actual condition and reasons of foreigners in Korea who have exceeded the sojourn period
- Building immigration statistics DB for establishment of evidence-based policies.

04

Social integration



- A study on the current status and implications of regionally specialized visa pilot projects
- A study on customized social integration education for various types of immigrants

05

Human rights & refugees



- A study on the refugee acceptance process of local residents
- A study on policy issues for community acceptance, settlement, and integration of resettled refugees

06

International immigration cooperation



- A study on the relationship between changes in political and economic conditions in neighboring countries and Korea's immigration policies
- A study on policy tasks linking international migration and development (ODA, etc.)

02. Education & Training Projects

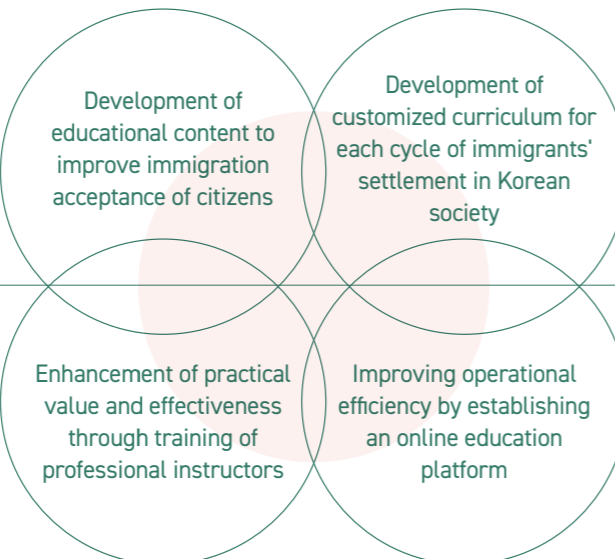
The MRTC education center is striving to establish its standing as the only educational institution specializing in immigration policies in Korea. We try to develop educational contents to enhance cultural diversity for the public so that interactive communication between Korean citizens and immigrants will be realized through education, while developing educational curricula suitable for the settlement cycle of immigrants as well. In 2023, we intend to conduct education projects focusing on collaborative training with local governments and regional centers to help with the development of local governments' immigration policies. As a future project, we plan to strengthen our educational function by establishing an online education platform to improve the accessibility and effectiveness of education.

In addition, as the 1st support group for the initial orientation course for immigrants, which is a consigned education project from the Ministry of Justice, the MRTC is running education sessions on basic law/order and settlement in Korean society for foreign students in the early stages of entry into Korea, foreigners from densely populated areas, and foreign celebrities. In addition, we are raising the level of expertise with the development of related textbooks and standard lecture plans, and instructor training. In 2023, the MRTC plans to gradually expand the subject of training, by conducting a pilot project related to the initial orientation course for seasonal workers, etc.

Strategic Goal

Establishment of an education system to create a society where national citizens and immigrants coexist

Strategic Initiatives



Key education initiatives for 2023

01

Public officials



Training for public officials in charge of immigration/ multicultural affairs in local governments
Education for public officials in specialized regions

02

Foreign residents



Initial orientation course for immigrants

03

Private activists



Education to strengthen the competency of regional center workers

04

The next generation on academics



2023 Next generation immigration policy academy

03. Cooperation Project

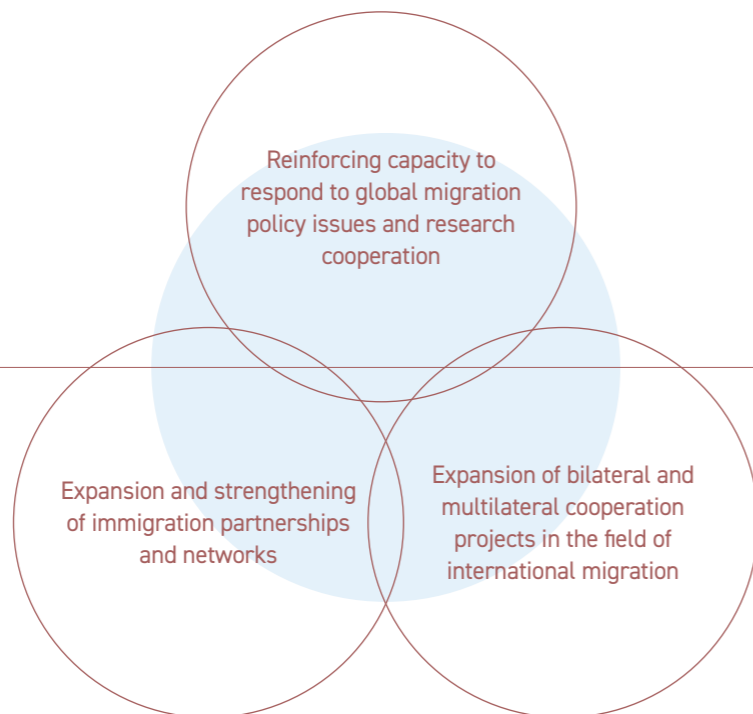
2023 is the first year in which the MRTC's legal basis (new provisions in the Framework Act on Treatment of Foreigners Residing in the Republic of Korea) will be prepared and implemented. Thus, cooperation projects will be promoted with a focus on substantially strengthening existing domestic/overseas cooperation partnerships.

MRTC's key cooperation projects will be: preparing a forum for immigration policies in consultation with the government and the National Assembly; networking with relevant organizations; discovery of budding researchers; and deepening the 'public-private-academic' policy feedback system through working with international organizations. This will help the MRTC contribute to the development of more effective and future-oriented national immigration policies.

Strengthening domestic and international cooperation functions for immigration policy development

Strategic Goal

Strategic Initiatives



Key cooperation initiatives for 2023

01

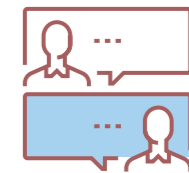
Networking with related organizations and experts



- Hold a briefing on MRTC's annual research outcomes
- Host joint academic conferences with related organizations (academies, researchers, universities, etc.)
- Networking with domestic and foreign immigration policy experts

02

Establishment of public forum for discussion on immigration policies



Hold policy discussions on pending immigration policy issues by the central government, local governments, and the National Assembly

03

Discovery of budding researchers



Host the 3rd immigration policy research paper contest

04

Cooperation with international organizations



The World Refugee Day Forum, World Migrants Day Forum, the International Youth UCC Festival PLRUAL+ (UNAOC), etc.

MRTC Updates

MRTC provides the latest news and information via various channels.
We would be grateful for your interest and support.

Homepage www.mrtc.re.kr
Facebook www.facebook.com/MRTC.RE.KR
Twitter www.twitter.com/MRTC_re_kr
Kakaotalk Find us at Kakaotalk ID @mrtc

Weekly Report

MRTC updates domestic and international news, policy, research trends, and seminars on immigration on a weekly basis. To receive MRTC's weekly report, please subscribe us by contact @mrtc.re.kr

Immigration Policy Trend Report(biannual)

This biannual report contains immigration policy, research trend of government agencies and institutes at home and abroad which can easily accessible to migration-related news and information

Migration Research & Training Centre (MRTC) Performance Report 2022

Publication Date June 2023
Publishing Director Shon, Hong-Kee

Publisher Migration Research and Training Centre
Annex Building of Yangcheon Building 2nd and 3rd FL,
93 Mokdongnam-ro, Yangcheon-gu, Seoul
T +82-2-3788-8000 | F +82-2-3788-8098 | H www.mrtc.re.kr

Design designzip www.designzip.co.kr



Annex Building of Yangcheon Building 2nd and 3rd FL,
93 Mokdongnam-ro, Yangcheon-gu, Seoul
www.mrtc.re.kr