

# Migration Research & Training Centre

## Performance Report 2024



The Migration Research and Training Centre was established in 2009 through an agreement between the International Organization for Migration (IOM) and the Korean government. It stands as Korea's exclusive research institute specializing in immigration policy under the legal framework of the Framework Act on Treatment of Foreigners Residing in the Republic of Korea.

Our institute conducts research aimed at formulating immigration policies that foster national development and promote social integration. In addition, we undertake a diverse array of educational programs and collaborate on domestic and international projects to enhance understanding of immigration policies among both Korean citizens and foreigners.



# CONTENTS

Preface

PART

1

PART

2

## Introduction of MRTC

01. Purpose of Foundation and Functions	10
02. MRTC History	11
03. Vision, Mission, and Objectives / Organization	12
04. Overview of MRTC in 2024	14

## 2024 MRTC Highlights

01. 4 Major News of MRTC in 2024	18
02. Research Projects	20
03. Education & Training Projects	29
04. Cooperation Projects	32



“ MRTC actively responded to the growing demand for foundational research and awareness-raising initiatives aimed at shaping immigration policies in line with changes in population structure throughout 2024. ”



The year 2024 marks a significant milestone, as the number of long-term foreign residents in Korea is expected to exceed 2 million. Amid a growing shift toward broader acceptance of immigration and diversity, clear signs of societal change are emerging. To respond effectively to the rapid transformation in population structure, a comprehensive immigration policy is needed, one that addresses the influx of skilled workers, family migration, and the expansion of long-term and permanent residency. At the same time, in-depth social discussions on immigration and diversity are actively underway.

Accordingly, the government is considering the establishment of a central immigration control tower to promote a more comprehensive and systematic immigration policy. At the same time, local governments are setting up dedicated departments for foreign residents and enhancing region-specific response systems. Notably, fostering an immigration policy environment based on close cooperation between central and local governments is emerging as a key priority.

Amid these developments, MRTC actively responded to the growing demand for foundational research and awareness-raising initiatives aimed at shaping immigration policies in line with changes in population structure throughout 2024. Efforts focused on bridging the gap between field practices and policymaking, including strengthening data-driven research to support evidence-based immigration policies,

collaborating with local governments on immigration-related initiatives, offering educational programs for both public sector personnel and the general public, and engaging in partnerships with relevant domestic and international organizations.

In addition, MRTC has been expanding its network by sharing Korea's immigration policy experience through official development assistance (ODA) projects aimed at strengthening immigration management capacities in developing countries, while also seeking solutions to global immigration challenges through collaboration with international organizations.

Going forward, MRTC will continue to fulfill its role as a specialized research institute by contributing to the development of a sustainable immigrant society through close collaboration with policymakers, data-driven policy proposals, and educational initiatives aimed at building social consensus.

I would like to express my deepest gratitude for your continued interest and support throughout the year, and MRTC remains committed to working towards a mutually beneficial immigrant society that we will build together in 2025.

Thank you.

June 2025  
Director **Woo, Byong-Yol**

Part

01

Introduction of  
MRTC



## 01. Purpose of Foundation and Functions

### Purpose of Foundation

- Promote international understanding of migrants and migration issues.
- Help countries develop migration policies through research, information exchange, survey, and migration-related education.
- Help countries improve their capacity through training on international migration law, migration management, and the human rights of migrants.
- Increase understanding of the connection between migration and development, the environment, national security, human rights, and employment.

### Main Functions



## 02. MRTC History

### 2000s

- 2007.** 11. The Ministry of Justice, Gyeonggi Province, and the IOM signed an MOU on the establishment of the MRTC
- 2009.** 07. The agreement on the establishment of the MRTC between the Republic of Korea and the IOM entered into force
- 2009.** 12. MRTC opened

### 2010s

- 2010.** 03. Charles Harns inaugurated as the 1st Director
- 2012.** 03. MRTC designated as the Asia Secretariat of the International Metropolis Project
- 2014.** 07. The Korean government and IOM signed the Establishment Agreement
- 2014.** 09. Jang, Joon-Oh inaugurated as the 2nd Director
- 2015.** 01. MRTC designated as the First Support Unit of the Initial Orientation Course for Immigrants (MOJ)
- 2017.** 01. Chung, Ki-Seon inaugurated as the 3rd Director
- 2019.** 11. MRTC's 10th-anniversary celebration

### 2020s

- 2020.** 01. Kang, Dong-Kwan inaugurated as the 4th Director
- 2020.** 05. MRTC relocated to Seoul from Gyeonggi Province
- 2021.** 12. IOM's 70th-anniversary celebration with IOM Seoul and the Seoul Metropolitan Government
- 2023.** 07. Name Change to Migration Research and Training Centre (Framework Act on Treatment of Foreigners Residing in the Republic of Korea Article 22-2 (Enforcement Date Jul. 19, 2023))
- 2023.** 11. Woo, Byong-yol inaugurated as the 5th Director
- 2025.** 03. MRTC relocated to Gwacheon, Gyeonggi Province.

### 03. Vision, Mission, and Objectives / Organization

**Vision**

An Institution specializing in immigration policy research and education in pursuit of the shared growth of Korea and the international community

**Mission**

Conduct research and education to develop immigration policies that benefit the government, local communities, citizens, and immigrants

**Objectives**

**Research**



Support the development and implementation of immigration policies for national development

**Education / Public Relations**



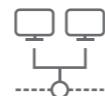
Improve the understanding of immigration policy at home and abroad

**Cooperation / Network**



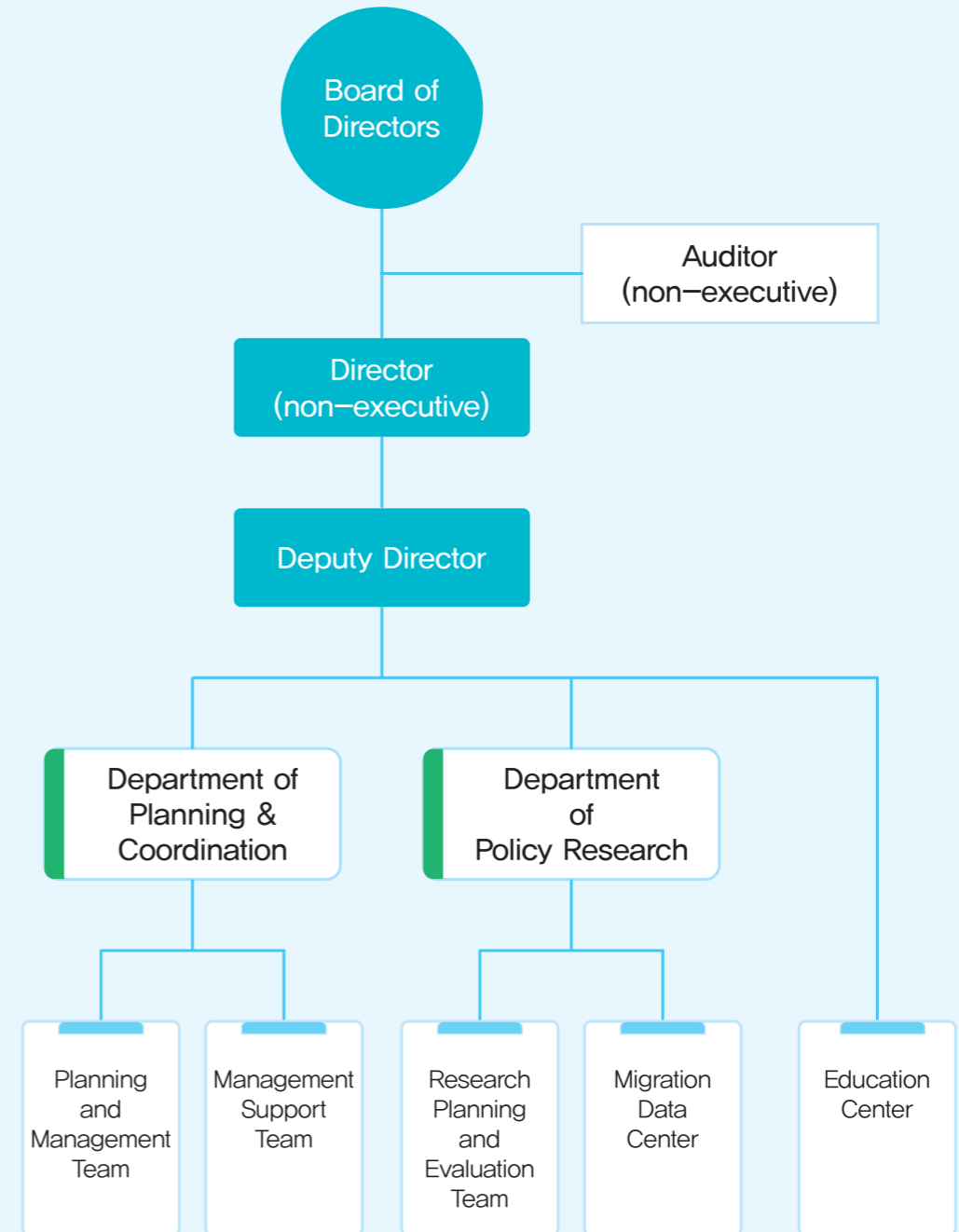
Strengthen domestic and international cooperation for the development of immigration policy

**Organization**



Reinforce organizational functions as a policy research institute

### Organization



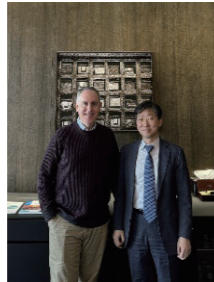
## 04. Overview of MRTC in 2024

- JAN.**
- 1. 24. Hosted a roundtable meeting with the Social Science Research Institute at Changwon National University
  - 1. 26. Hosted the 2023 MRTC Annual Research Performance Briefing

- FEB.**
- 2. 22. Hosted a roundtable meeting with the Immigration Services Agency of Japan
  - 2. 28. Hosted a roundtable meeting with the Vietnam Office of the International Organization for Migration (IOM)

- MAR.**
- 3. 5. Signed a Memorandum of Understanding (MOU) to establish the Immigration Policy Education Network
  - 3. 6. Conducted a roundtable meeting with Osaka Metropolitan University
  - 3. 20. Hosted a policy consultation with representatives from the Inter-American Development Bank (IDB) on immigration policies in Latin America and the Caribbean
  - 3. 29. Formalized the establishment of the Migration Data Center as part of MRTC's official organizational structure

- APR.**
- 4. 22. Signed an MOU with Korea University Library
  - 4. 26. MRTC Director Dr. Woo Byong-yol paid an official visit to the IOM Korea Office



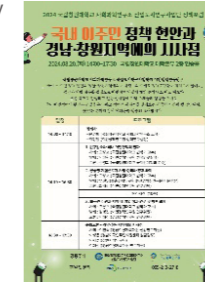
- MAY.**
- 5. 9.-22. Conducted the second-year training program on comprehensive immigration service management for the Mongolian Immigration Agency

- JUN.**
- 6. 10. Signed an MOU with the Korea Local Information Research & Development Institute
  - 6. 18. Co-hosted the Immigration Policy Forum with the Ministry of Justice in celebration of the 17th Together Day

- JUL.**
- 7. 19. Convened the 2024 MRTC Research Advisory Committee
  - 7. 25. Co-organized a policy forum with the Metropolitan Multicultural Education Network



- AUG.**
- 8. 20. Jointly hosted a policy forum with the Industrial City Research Center at Changwon National University



- SEP.**
- 9. 11. Signed an MOU with the Gangwon Research Institute to expand regional collaboration
  - 9. 23. Held the 2024 Next Generation Immigration Policy Academy
  - 9. 27. Co-hosted an academic forum with the Institute for Future Strategy at Seoul National University on labor market outlook and employment visa policy

- OCT.**
- 10. 24. Held a roundtable meeting with the Asian Development Bank Institute (ADBI)

- NOV.**
- 11. 5. Conducted a seminar on tailored integration support for students with a migrant background in collaboration with the Seoul Metropolitan Government
  - 11. 8. Hosted a roundtable meeting with the Korea Office of the United Nations High Commissioner for Refugees (UNHCR)
  - 11. 22. Organized an internal workshop for MRTC staff
  - 11. 28. Hosted the 2024 MRTC Immigration Data Seminar
  - 11. 29. Launched the 4th Immigration Policy Research Paper Contest for university and graduate students



- DEC.**
- 12. 10. Held a performance report seminar with the Ministry of Justice on the study "Measuring Immigrants' Integration Using the Social Integration Index and Providing Policy Consulting."
  - 12. 11. Participated in the Ministry of Justice's academic seminar on data-driven social integration policies
  - 12. 30. Signed an MOU with Sungkyul University to promote academic partnership



Part

---

02

---

2024 MRTC  
Highlights



01

4 Major News of  
MRTC in 2024



02

Research  
Projects



03

Education &  
Training  
Projects



04

Cooperation  
Projects

## 01. 4 Major News of MRTC in 2024

### Hosted the 2023 MRTC Annual Research Performance Briefing



MRTC held the <2023 Annual Performance Briefing> to present the center’s key achievements and major research projects from 2023, and to discuss the future direction of Korea’s immigration policy development.

In the first part of the briefing, MRTC shared its core business outcomes from 2023 and outlined

the business plan and strategic priorities for 2024. The second part focused on presenting major research tasks, followed by in-depth discussions with experts and scholars from related fields on each topic.

Director Woo, Byong-Yol stated, “In modern society, immigration policy plays a critical role in shaping a nation’s population structure, economy, society, and culture. MRTC will continue to pursue innovation and progress in immigration policy through high-quality research, in response to the evolving demands of the times.”

### Signed an MOU to establish the Immigration Policy Education Network

MRTC signed an <MOU for Establishing an Immigration Policy Education Network> with nine metropolitan governments and foreign-related organizations\*.

This agreement aims to promote the social integration of immigrants and citizens through close collaboration on immigration policy education projects, contributing to the successful settlement of immigrants and the development of local communities.

Through this education network, MRTC plans to identify cooperative opportunities across various areas, including finding shared interests within local communities related to immigration policy, training experts in immigration policy education, and developing and distributing educational content on immigration policy.



\*Gyeonggi Institute of Research and Policy Development for Migrants’ Human Rights, Daejeon Support Center for Foreign Residents, Seoul Foreign Resident Center, Incheon Support Center for Foreign Residents, Jeonbuk International Cooperation Agency, Jeju Self-Governing Province Migrant Workers Support Center, Cheongju Foreign Resident Support Center, Cheonansi Multicultural Family Support Center, KDream Center for Foreigners

### Hosted the 2024 MRTC Immigration Data Seminar



In response to the growing interest in data-driven policy development in the field of immigration, MRTC held the <2024 MRTC Immigration Data Seminar> to review the current status of immigration-related administrative and survey data and to discuss potential areas for improvement.

The first session of the seminar was held under the theme “Current Status and Improvement Measures of Foreign Employment in Korea”, and featured the presentation of results from the Manufacturing Sector-Foreign Worker Matching Survey conducted

this year by MRTC’s Migration Data Center.

In the second session, under the theme “Current Status of Immigration Administration and Survey Data and Tasks for Improvement,” participants discussed ways to enhance existing methods of data generation and provision, and emphasized the need to improve accessibility and integration of administrative data.

### Hosted the MRTC Immigration Policy Research Paper Contest for university and graduate students

To proactively respond to the growing demand for research in the field of immigration policy, MRTC hosts the <MRTC Immigration Policy Research Paper Contest> annually for undergraduate and graduate students, with this year marking its fourth edition.

Following internal and external evaluations, four winning papers were selected: one Grand Prize (Minister of Justice Award), one Excellence Prize (MRTC Director Award), and two Merit Awards (MRTC Director Award).

Director Woo, Byong-Yol commented, “This paper contest serves as a valuable opportunity to discover emerging researchers and expand the academic foundation of immigration policy, which is gaining increasing importance both in policy and society.”



## 02. Research Projects Performance

### Research Report

In-depth research and analysis of immigration policy-related fields such as immigration law and administration, immigration and economy, nationality and social integration, human rights, and refugees.

#### A Study on the Current Status of Elderly Immigrants and Policy Suggestions: Focusing on Korean-Chinese

**Chief Researcher** Mihwa Park  
**Co-researcher** Chang Won Lee, Dowon Kim, Dasom Lee

This study analyzes the current status and classification of elderly Korean-Chinese immigrants residing in Korea. It examines various factors such as visa types (H-2, F-4, F-5, F-1, F-2), economic activity, accompanying family members, and willingness to settle in Korea. Based on these typologies, it presents policy implications tailored to each group.

#### A Study on the Development of Regional Immigration Policy from the Intercultural Perspective: Focusing on the role of the community in the community of the Resident autonomous councils

**Chief Researcher** Miyoun An  
**Co-researcher** Ikhyun Jang, Minhyuk Park

This study provides a timely assessment of the evolving roles of local immigrant integration policies from an intercultural perspective. It examines institutional, legal, administrative, fiscal, participatory, and collaborative factors through the lens of community typologies and the profiles of foreign residents. Based on these insights, the study proposes effective and actionable policy strategies to enhance social cohesion and promote and immigrant self-reliance.

#### Immigration and Korean Economy (I): A fundamental study for the overall impacts of immigrants' economic activities in South Korea

**Chief Researcher** Dowon Kim  
**Co-researcher** Sujin Min, Juyoung Jang, Hwayeon Kim, Hyeongjin Kim, Hyejin Kim

Utilizing data gathered from public administration sources and private sector channels, this research aims to construct a foundational dataset to assess the overall economic impact of foreign residents and immigration policy on the Korean economy. It establishes a data-driven research framework to support policymaking and raise public awareness.

#### A study on establishing foundations for systematizing South Korea's international student policies

**Chief Researcher** Chang Won Lee  
**Co-researcher** Hwayeon Kim, Seori Choi, Dohye Kim, Dowon Kim

The study categorizes international student policy proposals by objectives and target groups, identifies inter-policy linkages, and analyzes governance structures. It further reviews the current data infrastructure and suggests ways to improve it to support evidence-based policymaking.

#### Establishing an Educational System for Local Governments to Promote Immigration Integration Policies

**Chief Researcher** Jungwon Huh, Minjeong Park  
**Co-researcher** Kyungyun Moon, Esther Park, Sunyoung Choi

This study explores strategies for developing an immigration education system tailored for local governments, in light of the formation of the Immigration Policy Education Network in 2024. It assesses current education programs by target group and evaluates demand in order to propose a sustainable, locally driven framework.

#### Organizational Effectiveness of Migrant Workers: A Human Resource Management Perspective

**Chief Researcher** Hwayeon Kim  
**Co-researcher** Dowon Kim, Oh Hyun-Gyu, Reginald G. Ugaddan

This study proposes human resource management strategies that promote organizational effectiveness for migrant workers. It examines approaches to improve adaptation and productivity and explores alternatives to punitive measures such as workplace and residence mobility restrictions.

#### Prospects of foreign workforce policy in care services

**Chief Researcher** Juyoung Jang  
**Co-researcher** Sujin Min, Hyeongjin Kim, Yangsook Kim, Younga Kim, Yuhwi Kim, Hyemee Kim, HeeJoo Kim, Hochang Roh, Sojin Yu, Kyungyun Moon, Hanjin Bae, Soo-Jung Byoun, Seohee Son, Naeyun Lee, Jooyoung Lee, Jihye Yi, Hee-pyung Cho, Kae-Young Choi, Saeun Choi, Chae Yoon Kang, Yeon Soo Kim, Seon Joo Lee, Ki-Duk Han

In response to Korea's aging population and demographic shifts, this study examines the demand and supply of foreign caregivers across sectors such as childcare and elderly care. Drawing on domestic policy reviews and international case studies, it proposes a phased introduction and management plan to minimize unintended consequences.

### A Study on the Employment-based Immigration Programs with a Focus on Trade Workers

**Chief Researcher** Seori Choi  
**Co-researcher** Sangji Lee, Seongil Park, Chang Won Lee, Dowon Kim, Cathy Kim

This study evaluates the feasibility of Korea’s employment-based immigration system for skilled workers (E-7-3, E-7-4), including wage analysis and the proposed tiered visa upgrade pathway. It also investigates differences in household expenditure patterns depending on whether immigrants are accompanied by their families, suggesting policy directions to support long-term settlement.

### Developing systems for the community integration of children with a migration background

**Chief Researcher** Juyoung Jang  
**Co-researcher** Eune Kang, Kyungmin Kim, HeeJoo Kim, Jingya Ding, Kyungyun Moon, Ji Hee Sung, Jiyeon Lee, Sun Young Lim, Heeju Hwang

Focusing on foreign children of elementary school age, this study analyzes their developmental needs based on established theories and identifies gaps in support across various ecological systems. It proposes a policy framework to strengthen their community integration.

### The status and improvement plan of the regional specialized visa project

**Chief Researcher** Minjeong Park  
**Co-researcher** Kiduk Han, Wan Lee, Hoayong Lee, Dongchan Park

This study assesses the current state of regionally specialized visa programs and identifies challenges in their implementation. Drawing insights from entrepreneurship and agricultural migration policies in other countries, it proposes improvement strategies tailored to Korea’s regional policy goals.

## Collection of Migration Policy Research

Research on the overview of various migration-related topics in legal system and trends etc.

### Building a Migration Database for Evidence-Based Policy Making (II)

**Chief Researcher** Dowon Kim  
**Co-researcher** Seong Il Park, Yejin Kim

This research reviews the results of the first-year migration database development project, addressing data gaps and refining content. It proposes additional data sourcing and visualization improvements to increase the utility of the database for internal research and policymaking.

## Policy Report

Research on policy recommendations through identification and analysis of current immigration policy issues

### The Effect of Foreign Resident Inflows on Local Government Policy: Evidence from Immigrant Concentration Areas

**Chief Researcher** Sujin Min  
**Co-researcher** Dongwon Lee

Focusing on regions with high concentrations of foreign residents, this study analyzes the impact of immigration on local government budgets—specifically in housing, safety, environment, transportation, culture, and tourism. It highlights the need for tailored improvements to public services in immigrant-dense areas.

### Impact of Foreign Workers on Firm’s Investment and R&D: An Empirical Evidence for Korean Municipalities

**Chief Researcher** Hyeongjin Kim  
**Co-researcher** Bong Guel Chun

Using municipal-level data, this study empirically assesses how the presence of foreign workers influences firm-level investment and R&D in the manufacturing sector. It offers policy recommendations to enhance industrial innovation in regions with foreign labor participation.

## Working Paper

Basic Research for the development of immigration policies that academically cover various migration-related topics in politics, society, and economy

### Industry Agglomeration, Location Choice, and Immigrants Employment

**Chief Researcher** Hyeongjin Kim

By decomposing industrial agglomeration patterns based on foreign worker employment data, this study identifies the characteristics of immigrant-dependent industries and analyzes how such clustering influences hiring and location decisions.

### The effect of Intergovernmental Transfers on the Inflow of Foreign Residents: Evidence from South Korea

**Chief Researcher** Sujin Min, Dowon Kim

This empirical study evaluates how intergovernmental transfers—such as national subsidies and grants—affect foreign resident inflows. It presents policy implications for improving equity in public service provision and the strategic use of fiscal resources.

## Statistics Series

Introduce the survey and basic analysis to ensure that the MRTC’s social survey and data can be effectively utilized in future research

### A Survey of the Employment of Foreigners in Korea

**Chief Researcher** Seori Choi  
**Co-researcher** Seong Il Park, Chang Won Lee, Dowon Kim, Chaemin Hyun, Yejin Kim

This study investigates foreign employment practices in Korean companies, including skill levels, working conditions, visa transitions, job changes, and the economic impact of family accompaniment.

## Issue Brief

A theoretical study on issues and challenges related to immigration both in Korea and internationally

### Public Perception and Future Tasks Regarding the Launch of the Immigration Administration

**Chief Researcher** Hwayeon Kim

This issue brief reports statistically representative findings on public perceptions regarding the establishment of a new Immigration Administration. It identifies key considerations for gaining stakeholder support and enhancing organizational credibility.

### The Role of Government in the Foreign Labor Market

**Chief Researcher** Seori Choi

As interest in hiring foreign workers grows due to Korea’s declining working-age population, this brief outlines the current state of the foreign job market and discusses potential roles the government.

### Recommendations for Managing Permanent Immigration: Lessons from Abroad

**Chief Researcher** Seori Choi

This brief explores how advanced immigration countries classify and manage permanent immigrants and generate related statistics. It provides recommendations for Korea on revising its typology, expanding data coverage, and adopting the concept of secondary applicants.

## Issue Brief

### Waste Disposal Practices of Foreign Residents and Social Integration

**Chief Researcher** Sujin Min, Dowon Kim

This study focuses on household waste disposal patterns among foreign residents, a frequent source of local-level social friction. It compares practices by region and nationality to propose integration-oriented policy solutions.

### Comparative Analysis of Migrant Integration Policies in Sweden and the UK via MIPEX

**Chief Researcher** Sungmi Kim

Using MIPEX scores from 2007 to 2019, this analysis compares migrant integration policies in Sweden and the UK. It draws lessons for Korea by identifying international policy trends and highlighting statistical gaps in Korea’s integration framework. The study suggests complementary measures to address these gaps and enhance the effectiveness of Korea’s migrant integration policies within a broader European and global context.

### Challenges of the Investor Immigration Program in Korea

**Chief Researcher** Hyeongjin Kim

This study examines the legal basis, implementation, and policy direction of Korea’s investor immigration program. It reviews international case studies to identify challenges and potential improvements.

### Policy Suggestions for Vocational High School Students from Migrant Backgrounds

**Chief Researcher** Minjeong Park

Focusing on vocational high school students with a migrant background, this study identifies barriers to employment and further education, such as documentation burdens and timing mismatches. It proposes equity-oriented policy measures.

## Statistics Brief

Introduction of major domestic and international immigration statistics and researcher-produced statistics

### Trend and Characteristics of F-2 Visa Holders(2010-2023)

**Chief Researcher** Eunjin An, Seori Choi

Using administrative data, this brief examines trends among F-2 visa holders from 2010 to 2023 across subcategories. It suggests improvements to government-published statistics and the need for refined classification.

### Trends in Employment Visa Holders and Their Families(2010-2023)

**Chief Researcher** Sangji Lee, Seori Choi

This study analyzes flows of foreign nationals holding employment-based visas and their families to inform statistical system enhancements and data-driven policymaking.

### Status of Korean Diaspora by Visa Type, Age, and Region(2010-2023)

**Chief Researcher** Mihwa Park, Seori Choi

This report reviews trends in foreign nationals of Korean descent living in Korea (dongpo), categorized by visa type, age, and geographic location. It proposes administrative and survey-based improvements for migration statistics.

### Understanding and Trend Analysis of Seasonal Workers(2021-2023)

**Chief Researcher** Seong Il Park, Seori Choi

This brief reviews seasonal foreign worker trends in Korea's agriculture and fisheries sectors since 2017 and recommends improvements for statistical tracking and usage.

### Trends in Foreign National and D-2 Student Populations(2014-2023)

**Chief Researcher** Chaemin Hyun, Seori Choi, Chang Won Lee

This analysis compares international student statistics published by the Ministry of Justice and the Ministry of Education. It assesses data differences and proposes unified approaches to track foreign national student populations by visa type.

## Statistics Brief

### Post-Graduation Plans of International Students in Korea

**Chief Researcher** Chaemin Hyun, Seori Choi, Chang Won Lee

This brief investigates the post-graduation residency and employment intentions of international students using 2017, 2020, and 2023 immigration survey data. It provides recommendations for student retention policies and statistical refinement.

### Distribution of Foreign Workers in Registered Factories(2010-2023)

**Chief Researcher** Hyeongjin Kim

Based on factory registration data from 2010 to 2023, this study analyzes foreign worker distribution by industry and region, proposing improved guidelines for industrial labor statistics.

### Geographic Distribution of Registered Foreigners (I): Heterogeneity by Region

**Chief Researcher** Hayoung Cho

This report analyzes the spatial heterogeneity of foreign residents by nationality and local administrative unit. It uses registration data to identify population clusters and integration implications.

### Geographic Distribution of Registered Foreigners (II): Nationality-based Trends

**Chief Researcher** Hayoung Cho

Building on the previous study, this report explores the factors contributing to residential distribution among foreign national groups and compares clustering patterns across nationalities.

### Clustering Migrant Workers Using K-Prototypes and Workplace Satisfaction

**Chief Researcher** Hwayeon Kim

Using 2023 survey data, this study applies k-prototypes clustering to migrant workers and evaluates differences in job satisfaction across clusters. It offers insights for workplace inclusion policies.

## Statistics Brief

### Global Perception of Immigrants: Insights from the World Values Survey

**Chief Researcher** Sujin Min

This brief uses World Values Survey data to compare perceptions of immigrants in 66 countries across cultural, social, and economic dimensions. It draws implications for Korean public opinion research and survey design.

### Post-Graduation Residency and Employment Intentions of International Students

**Chief Researcher** Mingyeong Park, Seori Choi

Using immigration survey data from 2017, 2020, and 2023, this brief analyzes international students' intentions to remain and work in Korea after graduation. It proposes data and policy enhancements.

### National Pension Coverage among Foreign Residents(2020-2023)

**Chief Researcher** Dowon Kim, Yongwoo Lee

This report analyzes national pension subscription and benefit receipt among foreign residents based on 2020-2023 data. It recommends reforms to ensure fiscal sustainability in social insurance systems.

### Overstay Duration and Characteristics of Foreign Nationals

**Chief Researcher** Chang Won Lee, Yejin Kim

This report analyzes the duration and characteristics of foreign nationals who voluntarily reported their departure after overstaying their visas. It emphasizes the need for the systematic accumulation and management of administrative data related to overstays.

## 03. Education and Training Projects

### Performance of basic education projects

In 2024, the MRTC Education Center focused on strengthening educational governance to promote understanding of immigration policies and social integration, while expanding education tailored to the needs of policy stakeholders. A total of 26 group training sessions were conducted for participants including central and local government officials, civil society activists, new researchers, foreign residents, and the general public, with a total of 1,441 attendees.

Notably, collaboration within the Immigration Policy Education Network, comprising 14 MOU-signed organizations, was reinforced. In response to the growing regionalization of immigration policy, joint seminars and educational sessions were held in partnership with local civic groups, research institutes, and universities to enhance the expertise of those responsible for immigration policy at the local level. In addition, customized awareness-raising programs were developed and implemented for various target groups to foster greater public acceptance. An online platform for e-learning was also established. New digital content was developed, and pilot online courses reached 2,473 participants. MRTC plans to further expand and systematize its e-learning programs going forward.

No.	Type	Title	Date
1	Public officials	Cultural Diversity Education for Public Officials of Ansan City (1st Session)	5. 24.
2		Cultural Diversity Education for Public Officials of Ansan City (2nd Session)	5. 30.
3		Cultural Diversity Education for Public Officials of Gangwon Province	9. 25.
4	Next-generation scholars	MRTC - Gangwon Institute Joint Seminar	9. 11.
5		2024 Next Generation Immigration Policy Academy(1st Session)	9. 23.~24.
6		2024 Next Generation Immigration Policy Academy(2nd Session)	
7		2024 Next Generation Immigration Policy Academy(3rd Session)	
8		2024 Next Generation Immigration Policy Academy(4th Session)	
9	Ways to Improve Multicultural Awareness Training in Collaboration with Kyung Hee Cyber University and Inha University	11. 29.~30.	
10	Private activists	1st Capacity Building Training for Workers of Gyeongbuk Provincial Government and K-Dream Foreign Support Center	10. 8.~9.
11		2nd Capacity Building Training for Workers of Gyeongbuk Provincial Government and K-Dream Foreign Support Center	10. 21.~22.
12		Jointly Planned Immigration Policy Education Workshop by MRTC and the Immigration Policy Education Network	10. 15.
13		1st Capacity Building Training for Workers of Incheon Foreign Residents Support Center	11. 8.
14		2nd Capacity Building Training for Workers of Incheon Foreign Residents Support Center	11. 18.
15		3rd Capacity Building Training for Workers of Incheon Foreign Residents Support Center	11. 27.
16		Airport Tour & Staff Training in Collaboration with Incheon Foreign Residents Support Center	11. 20.
17		Collaboration Meeting for Multicultural Communication Platform at Konkuk University	11. 17.
18		Capacity Building Training for Workers of Incheon Seo-Gu Family Center	11. 27.
19		Capacity Building Training for Workers of Incheon Namdong-Gu Family Center	11. 28.
20	Human Rights Reboot Forum in Collaboration with the Third Voice	12. 5.	

No.	Type	Title	Date
21	Foreign residents	2024 MRTC - Da+On Center, Harim Communication Workshop for Families with Migrant Background	7. 27.
22		"Today" Meeting Diversity	10. 26.
23		Workshop on Building a Foreign Talent Community	12. 7.
24	Citizens	MRTC - Metropolitan Multicultural Education Network Policy Forum	7. 25.
25		Seminar on Tailored Integration Support for Students with a Migrant Background	11. 5.
26		Book Event by Author Lee Wan	12. 2.
27	MOU	MOU Signing with Immigration Policy Education Network	3. 5.
28		MOU Signing between MRTC and Gangwon Institute	9. 11.
29		MOU Signing with the Immigration Policy Education Network	10. 15.
30	Online Education	Title: Immigration: Burden or Opportunity / Seoul & Intercultural Understanding	1. 1.~12. 31.
31		DAGACHI (cultural diverse) Forum	9. 25.~12. 31.
32		Title: Do You Know Refugees? / If Migrant Workers Disappear Tomorrow	11. 1.~12. 31.
33		Migrant Human Rights Reboot Forum	12. 5.~31.
34	Website & Content Development	1 Project: Building the Official Website for MRTC Education Center	-
35		10 Sessions of New Online Education Content Creation for 2024	-

### Performance of consigned education projects

As the lead organization for the education program supporting the early settlement of immigrants, MRTC operated the Early Adaptation Education Program in collaboration with related agencies, including the Ministry of Justice, reaching a total of 8,400 participants. The program's target groups were expanded to include international students, entertainers, seasonal workers, resettled refugees, and foreign workers. It also scaled nationwide, involving 140 support centers and 361 instructors. The quality of the program was enhanced by standardizing and distributing early adaptation textbooks and lecture materials, and by conducting capacity-building training sessions for instructors. In response to the increased hours required for early adaptation education, MRTC also collaborated on the development and translation of specialized materials on crime prevention and industrial safety, further solidifying the program's educational foundation. Additionally, six regional workshops were held for central and local government officials responsible for immigration-related policies, with 609 participants. In partnership with the Seoul Metropolitan Government, MRTC also delivered cultural diversity education to 370 members of the general public, contributing to greater public understanding and social integration.

Commissioned Organization	Title	Period
Ministry of Justice	2024 Initial Orientation Course for Immigrants (1st Support Unit) - Operated the courses : 204 rounds in total, 8,400 participants completed - Operated instructor training and refresher training for Initial Orientation Course for Immigrants	2024. 1. 1. ~ 12. 31.
Ministry of Justice	2024 Workshop for Central and Local Government Officials Involved in Foreigners' Policy - 6 rounds in total, 609 people participated	2024. 4. 9. ~ 12. 16.
Seoul Metropolitan Government	Cultural diversity understanding education for general citizens - 8 rounds in total, 939 people participated	2024. 5. 1. ~ 12. 31.

### Photograph of an educational project

MRTC - Gangwon Institute Joint Seminar



Airport Tour & Staff Training in Collaboration with Incheon Foreign Residents Support Center



Capacity Building Training for Workers of Incheon Namdong-Gu Family Center



Seminar on Tailored Integration Support for Students with a Migrant Background



## 04. Cooperation Projects

### Performance of cooperation projects

MRTC actively carried out various domestic and international cooperation projects throughout 2024 to enhance expertise and promote the dissemination of immigration policy. In addition to partnerships with various central government ministries and local governments, such as Gyeongsangbuk-do and Jeju Special Self-Governing Province, the foundation for policy dissemination was strengthened through business agreements with universities (Korea University, Sungkyul University) and public institutions, including the Korea Local Information Research & Development Institute (KLID). Furthermore, the MRTC Immigration Policy Research Paper Contest received 38 submissions, twice the number from the previous year, actively supporting the engagement of the next generation in immigration policy research. This contest also contributed to fostering future experts through programs such as graduate school internships. In the area of international cooperation, MRTC solidified partnerships with major international organizations such as the International Organization for Migration (IOM), the United Nations High Commissioner for Refugees (UNHCR), and the Organisation for Economic Co-operation and Development (OECD), while also establishing a cooperation network with the Inter-American Development Bank (IDB) and the Asian Development Bank Institute (ADBI). Moreover, MRTC enhanced its capacity for international joint research and global policy collaboration through exchanges with foreign government agencies, including the Mongolian Immigration Agency and Japan's Immigration Bureau of Japan, as well as with leading overseas research and academic institutions such as the Max Planck Institutes in Germany.

### Domestic cooperation & international cooperation

No.	Domestic / International	Category	Title	Date
1	Domestic	Government agencies	[Gyeongbuk Province] MRTC Roundtable Meeting	4. 25.
2			[Ministry of Justice] The 4th Immigration Policy Research Paper Contest	6. 10.~11. 29.
3			[Jeju Special Self-Governing Province] MRTC Roundtable Meeting	10. 10.
4		Networking activities	[Social Science Research Institute, Changwon National University] MRTC Roundtable Meeting	1. 24.
5			Presenting the findings of research titled "Exploring Interactions with Refugees and Attitudes towards Refugee Integration in South Korea"	3. 26.
6			[Korea University Library] Signing of an MOU between MRTC and Korea University Library	4. 22.
7			[Korea Local Information Research & Development Institute] Signing of an MOU between MRTC and Korea Local Information Research & Development Institute	6. 10.
8			[Industrial City Research Center, Social Science Research Institute, Changwon National University] Joint Policy Forum	8. 20.
9			[Sungkyul University] Signing of an MOU between MRTC and Sungkyul University	12. 30.
10			Others	[School of Social Welfare, Yonsei University] Offering the MRTC Student Internship Program
11		Consigned	Immigration Policy Forum for the 17th "Together Day"	6. 3.~30.
12			[MRTC - Institute for Future Strategy, Seoul National University] Joint Academic Forum	9. 27.
13			A Performance Report Event/Seminar: "Measuring Immigrants' Integration Using the Social Integration Index and Providing Policy Consulting"	12. 10.~11.

No.	Domestic / International	Category	Title	Date	
14	International	International agencies	[Immigration Services Agency of Japan] MRTC Roundtable Meeting	2. 22.	
15			[IOM Vietnam] MRTC Roundtable Meeting	2. 28.	
16			[IDB(Inter-American Development Bank)] Meeting with officials in charge of immigration policy of Latin America and the Caribbean	3. 20.	
17			[IOM Vietnam] Consultation regarding co-publication of the Issue Brief	4. 25.	
18			[ADBI-OECD-ILO] Roundtable on Labor Migration in Asia	5. 28.~29.	
19			[UNAOC - IOM] Event for selecting winning videos for the 2024 edition of PLURAL+ Youth Video Festival	8. 1.~11. 30.	
20			[ADBI] MRTC Seminar	10. 24.	
21			[UNHCR] MRTC Roundtable Meeting	11. 8.	
22			Networking activities	[Osaka Metropolitan University in Japan] MRTC Roundtable Meeting	3. 6.
23				[University of Amsterdam in the Netherlands] MRTC Roundtable Meeting	3. 14.
24		[Toyo University in Japan] MRTC Roundtable Meeting		5. 3.	
25		[Max Planck Institute & Freie Universitaet Berlin in Germany] Physically participating in discussion sessions at academic events		12. 16.~19.	
26		Consigned	[KOICA] Comprehensive Capacity-building Program for the Immigration Agency of Mongolia (Continued)	'23~'25	

### Photographs of domestic · international cooperation

Presenting the findings of research titled "Exploring Interactions with Refugees and Attitudes towards Refugee Integration in South Korea"



Signing of an MOU between MRTC and Korea Local Information Research & Development Institute



Immigration Policy Forum for the 17th "Together Day"



[IDB(Inter-American Development Bank)] Meeting with officials in charge of immigration policy of Latin America and the Caribbean



[MRTC - Institute for Future Strategy, Seoul National University] Joint Academic Forum



[Osaka Metropolitan University in Japan] MRTC Roundtable Meeting



A Performance Report Event/Seminar: "Measuring Immigrants' Integration Using the Social Integration Index and Providing Policy Consulting"



Comprehensive Capacity-building Program for the Immigration Agency of Mongolia (Continued)



[IOM Vietnam] MRTC Roundtable Meeting



## MRTC Updates

As a hub for migration policy research and public dialogue, the Migration Research and Training Centre (MRTC) shares timely updates on domestic and international developments in immigration policy, research, and education.

We invite you to stay informed and engaged through the following channels:

<b>Homepage</b>	<a href="http://www.mrtc.re.kr">www.mrtc.re.kr</a>
<b>Facebook</b>	<a href="https://www.facebook.com/MRTC.RE.KR">www.facebook.com/MRTC.RE.KR</a>
<b>Twitter</b>	<a href="https://www.twitter.com/MRTC_re_kr">www.twitter.com/MRTC_re_kr</a>
<b>Kakaotalk Find us at Kakaotalk ID</b>	@mrtc or Search for 'MRTC' in the search bar.

## Weekly Report

MRTC publishes a Weekly Report featuring updates on immigration-related policies, research trends, and upcoming seminars both in Korea and abroad.

To subscribe, please visit our homepage and click the subscription popup located in the top-right corner.

## Migration Research & Training Centre \_ Performance Report 2024

---

**Publication Date** June 2025

**Publishing Director** Woo, Byong-Yol

**Publisher** Migration Research and Training Centre

**Address** 6F, Ground V, 54 Gwacheon-daero 2-gil, Gwacheon-si, Gyeonggi-do

**T** +82-2-3788-8000 | **F** +82-3788-8098 | **H** [www.mrtc.re.kr](http://www.mrtc.re.kr)

**Design** Seolim Design Company

---

© MRTC. ALL RIGHTS RESERVED. 2024

---